



# Factors determining the diffusion of COVID-19 and suggested strategy to prevent future accelerated viral infectivity similar to COVID



Mario Coccia

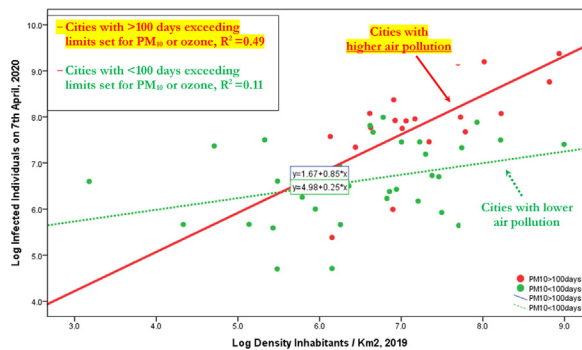
CNR – National Research Council of Italy, Research Institute on Sustainable Economic Growth, Collegio Carlo Alberto, Via Real Collegio, 30-10024 Moncalieri, Torino, Italy  
Yale School of Medicine, 310 Cedar Street, Lauder Hall, New Haven, CT 06510, USA

## HIGHLIGHTS

- Transmission dynamics of COVID-19 is due to *air pollution-to-human transmission* rather than *human-to-human transmission*
- Cities with more than 100 days of air pollution have a very high average number of infected individuals
- Transmission dynamics of COVID-19 has a high association with air pollution of cities in the presence of low wind speed
- Polluting cities in *hinterland* with low speed of wind have a high number of infected individuals than *coastal cities*
- A strategy to prevent future epidemics has also to be based on sustainability science and environmental science

## GRAPHICAL ABSTRACT

This result reveals that transmission dynamics of COVID-19 is due to *two mechanisms* given by: *human-to-human transmission* (measured with density of population) and *air pollution-to-human transmission* (*airborne viral infectivity*); in polluting cities with low wind speed, the accelerated diffusion of viral infectivity is also due to mechanism of air pollution-to-human transmission that may be *stronger* than human-to-human transmission.



## ARTICLE INFO

### Article history:

Received 3 April 2020

Accepted 3 April 2020

Available online 20 April 2020

Editor: Damia Barcelo

### Keywords:

Coronavirus Infection

COVID-19

Virus Pneumonia

Severe Acute Respiratory Syndrome Coronavirus 2

SARS Coronavirus

SARS-CoV-2

Pandemic

Epidemic Outbreak

Transmission Dynamics

Disease Transmission

## ABSTRACT

This study has two goals. The *first* is to explain the geo-environmental determinants of the accelerated diffusion of COVID-19 that is generating a high level of deaths. The *second* is to suggest a strategy to cope with future epidemic threats similar to COVID-19 having an accelerated viral infectivity in society. Using data on sample of  $N = 55$  Italian province capitals, and data of infected individuals at as of April 7th, 2020, results reveal that the accelerate and vast diffusion of COVID-19 in North Italy has a high association with air pollution of cities measured with days exceeding the limits set for  $PM_{10}$  (particulate matter  $10 \mu m$  or less in diameter) or ozone. In particular, hinterland cities with average high number of days exceeding the limits set for  $PM_{10}$  (and also having a low wind speed) have a very high number of infected people on 7th April 2020 (arithmetic mean is about 2200 infected individuals, with average polluted days greater than 80 days per year), whereas coastal cities also having days exceeding the limits set for  $PM_{10}$  or ozone but with high wind speed have about 944.70 average infected individuals, with about 60 average polluted days per year; moreover, cities having more than 100 days of air pollution (exceeding the limits set for  $PM_{10}$ ), they have a very high average number of infected people (about 3350 infected individuals, 7th April 2020), whereas cities having less than 100 days of air pollution per year, they have a lower average number of infected people (about 1014 individuals). The findings here also suggest that to minimize the impact of future epidemics similar to COVID-19, the max number of days per year that Italian provincial capitals or similar industrialized cities can exceed the limits set for  $PM_{10}$  or for ozone, considering their meteorological conditions, is about 48 days. Moreover, results here reveal that the explanatory variable of *air pollution* in

E-mail address: [mario.coccia@cnr.it](mailto:mario.coccia@cnr.it).

Air Pollution  
 Particulate Matter  
 Infection Prevention  
 Quarantine  
 Airborne disease  
 Airborne Transmission  
 Virus Transmission  
 Lung Disease  
 Opportunistic pathogen  
 Viral infectivity

JEL codes:

F64  
 H84  
 I10  
 I18  
 I19  
 K32  
 O33  
 Q50  
 Q51  
 Q52  
 Q53  
 Q55  
 Q58  
 Q59

cities seems to be a more important predictor in the initial phase of diffusion of viral infectivity (on 17th March 2020,  $b_1 = 1.27, p < 0.001$ ) than *interpersonal contacts* ( $b_2 = 0.31, p < 0.05$ ). In the second phase of maturity of the transmission dynamics of COVID-19, air pollution reduces intensity (on 7th April 2020 with  $b'_1 = 0.81, p < 0.001$ ) also because of the indirect effect of lockdown, whereas regression coefficient of transmission based on interpersonal contacts has a stable level ( $b'_2 = 0.31, p < 0.01$ ). This result reveals that accelerated transmission dynamics of COVID-19 is due to mainly to the mechanism of "air pollution-to-human transmission" (airborne viral infectivity) rather than "human-to-human transmission". Overall, then, transmission dynamics of viral infectivity, such as COVID-19, is due to systemic causes: *general factors* that are the same for all regions (e.g., biological characteristics of virus, incubation period, etc.) and *specific factors* which are different for each region and/or city (e.g., complex interaction between air pollution, meteorological conditions and biological characteristics of viral infectivity) and health level of individuals (habits, immune system, age, sex, etc.). Lessons learned for COVID-19 in the case study here suggest that a proactive strategy to cope with future epidemics is also to apply especially an environmental and sustainable policy based on reduction of levels of air pollution mainly in hinterland and polluting cities- (having low wind speed, high percentage of moisture and number of fog days) -that seem to have an environment that foster a fast transmission dynamics of viral infectivity in society. Hence, in the presence of polluting industrialization in regions that can trigger the mechanism of air pollution-to-human transmission dynamics of viral infectivity, this study must conclude that a comprehensive strategy to prevent future epidemics similar to COVID-19 has to be also designed in environmental and socioeconomic terms, that is also based on sustainability science and environmental science, and *not only* in terms of biology, medicine, healthcare and health sector.

© 2020 Elsevier B.V.

## 1. The problem and goals of this investigation

This study has two goals. The *first* is to explain the main factors determining the diffusion of COVID-19 that is generating a high level of deaths worldwide. The *second* is to suggest a strategy to cope with future epidemic threats similar to COVID-19 having an accelerated viral infectivity in society.

Coronavirus disease 2019 (COVID-19) is a viral infection that generates a severe acute respiratory syndrome with serious clinical symptoms given by fever, dry cough, dyspnea, respiratory disorders and pneumonia and may result in progressive respiratory failure and death. Kucharski et al. (2020) argue that COVID-19 transmission declined in Wuhan (China) during late January 2020 (WHO, 2019, 2020, 2020a; nCoV-2019 Data Working Group, 2020). However, as more infected individuals arrived in international locations before control measures are applied, numerous epidemic chains have led to new outbreaks in different nations (Xu and Kraemer Moritz, 2020; Wang et al., 2020; Wu et al., 2020). An outbreak of COVID-19 has led to more than 26,640 confirmed deaths in Italy and more than 206,560 deaths worldwide as of April 27, 2020 (Johns Hopkins Center for System Science and Engineering, 2020; cf., Dong et al., 2020). The prime factors of transmission dynamics of COVID-19 in Italy, having a very high number of deaths, are crucial elements for explaining possible relationships underlying the temporal and spatial aspects of the diffusion of this viral infectivity worldwide. Results here are basic to design a strategy to prevent future epidemics similar to COVID-19 that generates health and socioeconomic issues for nations and globally (EIU, 2020a).

Currently, as people with the COVID-19 infection can arrive in countries or regions with low ongoing transmission, efforts should be done to stop disease transmission, prevent potential outbreaks and to avoid second and other subsequent epidemic waves of COVID-19 (European Centre for Disease Prevention and Control, 2020; Quilty et al., 2020). Wells et al. (2020) argue that at the very early stage of the epidemic, reduction in the rate of exportation could delay the importation of cases into cities or nations unaffected or with low number of cases of COVID-19, to gain time to coordinate an appropriate public health response. After that, rapid contact tracing is basic within the epicenter and within and between importation cities to limit human-to-human transmission outside of outbreak cities or countries, also applying appropriate isolation of cases (Wells et al., 2020). For instance, the severe

acute respiratory syndrome outbreak in 2003 started in southern China was able to be controlled through tracing contacts of cases because the majority of transmission occurred after symptom onset (Glasser et al., 2011). These interventions also play a critical role in response to outbreaks where onset of symptoms and infectiousness are concurrent, such as Ebola virus disease (WHO, 2020b; Swanson et al., 2018), MERS (Public Health England, 2019; Kang et al., 2016) and other viral diseases (Hoang et al., 2019; European Centre for Disease Prevention and Control., 2020a). Kucharski et al. (2020) claim that the isolation of cases and contact tracing can be less effective for COVID-19 because infectiousness starts before the onset of symptoms (cf., Fraser et al., 2004; Peak et al., 2017). Hellewell et al. (2020) show that effective contact tracing and case isolation are enough to control a new outbreak of COVID-19 within three months, but the probability of control decreases with long delays from symptom onset to isolation that increase transmission before symptoms. In the presence of COVID-19 outbreaks, it is crucial to explain the determinants of the transmission dynamics of this infectious disease for designing strategies to stop or reduce diffusion, empowering health policy with economic, social and environmental interventions. This study focuses on statistical analyses of association between infected people and environmental, demographic and geographical factors that can explain the transmission dynamics of COVID-19 over time, and provide insights to apply appropriate measures of infection control (cf., Camacho et al., 2015; Funk et al., 2017; Riley et al., 2003). In particular, this study here can explain, whenever possible, factors determining the accelerated viral infectivity in specific regions to guide policymakers to prevent future epidemics similar to COVID-19 (Cooper et al., 2006; Kucharski et al., 2015). However, there are several challenges to such study, particularly in real time. Sources may be biased, incomplete, or only capture certain temporal and spatial aspects of on-going outbreak dynamics.

## 2. Materials and methods

The complex problem of viral infectivity of COVID-19 is analyzed here in a perspective of reductionist approach, considering the geo-environmental and demographic factors of cities to explain the relationships supporting the transmission dynamics of this viral infectivity (cf., Linstone, 1999). In particular, this study focuses on causes of the diffusion of COVID-19 among Italian province capitals. The investigation of

the causes of the accelerated diffusion of Coronavirus infection is done with a philosophical approach *sensu* the scholar Vico<sup>1</sup> (Flint, 1884). The method of inquiry here is also based on Kantian approach in which theoretical framework and empirical data complement each other and are inseparable. In this case, the truth on this phenomenon under study, i.e., transmission dynamics of COVID-19, is a result of synthesis (Churchman, 1971).

### 2.1. Data and their sources

This study focuses on  $N = 55$  Italian cities that are provincial capitals. Sources of data are The Ministry of Health in Italy for epidemiological data (Ministero della Salute, 2020), Legambiente (2019) for data of air pollution deriving from the Regional Agencies for Environmental Protection in Italy, il Meteo (2020) for data of weather trend in 2020 (February and March) based on information of meteorological stations of Italian province capitals, finally the Italian National Institute of Statistics for data of the density of population concerning cities under study (ISTAT, 2020).

### 2.2. Measures

The unit of analysis here is Italian provincial cities. In a perspective of reductionism approach for statistical analysis and decision making, this study focuses on following measures.

- **Pollution.** Total days exceeding the limits set for PM<sub>10</sub> (particulate matter 10 μm or less in diameter) or for ozone in the 55 Italian provincial capitals over 2018 year. This measure has stability over time and the strategy of using the year 2018, before the COVID-19 outbreak in Italy, is to consider the temporal health effects of air pollution on population (Brunekreef and Holgate, 2002a,b). In fact, number of days of air pollution within Italian cities is a main factor that affects both health of population and environment (Legambiente, 2019).
- **Diffusion of COVID-19.** Number of infected individuals from 17th March 2020 to 7th April 2020 (Ministero della Salute, 2020). Infected individuals are detected with COVID-19 tests according to following criteria:
  - Have fever or lower respiratory symptoms (cough, shortness of breath) and close contact with a confirmed COVID-19 case within the past 14 days; OR
  - Have fever and lower respiratory symptoms (cough, shortness of breath) and a negative rapid flu test.
- **Meteorological information.** Average temperature in °C, Moisture %, wind speed in km/h, days of rain and fog from 1st February to 1st April 2020 (il Meteo, 2020).
- **Interpersonal contact rates.** A proxy of interpersonal contact here considers the density of population (individual/km<sup>2</sup>) in 2019 of Italian province capitals (ISTAT, 2020).

### 2.3. Data analysis and procedure

This study analyses a database of  $N = 55$  Italian provincial capitals, considering variables in 2018–2019–2020 to explain the relationships

<sup>1</sup> Flint (1884, p. 105, original emphasis): “Vico entirely accepted. *Vere scire est per causas scire*—... like Aristotle and everyone else who has undertaken to defend the position that there can be no adequate knowledge where causes are unknown, he had to understand the word cause in a wide sense, inclusive of conditions and principles in general as well as of causes strictly so termed. The cause of a thing is whatever adequately explains it,—the whole ground, reason, or source of it, *quella che per produrre l'effetto non ha d'altra bisogno*... Hence also the phrases, ‘to prove by causes,’ ‘to collect the elements of a thing,’ and ‘to make,’ are understood as equivalent: *probare per causas idem est ac efficere*, — *probare a causis est elementa rei colligere*.”

between diffusion of COVID-19, demographic, geographical and environmental variables.

Firstly, preliminary analyses of variables are descriptive statistics based on mean (M), std. deviation (SD), skewness and kurtosis coefficients to assess the normality of distributions and, if necessary to fix the distributions of variables under study with a *log*-transformation.

Statistical analyses are performed categorizing Italian provincial capitals in groups as follows:

- Hinterland cities
- Coastal cities

Categorization in:

- Cities with *higher wind speed*
- Cities with *lower wind speed*

Categorization in:

- Cities of *North Italy*
- Cities of *Central-South Italy*

Categorization in:

- Cities with *>100 days* per year exceeding the limits set for PM<sub>10</sub> or for ozone
- Cities with *<100 days* per year exceeding the limits set for PM<sub>10</sub> or for ozone

Categorization in (2 categories):

- Cities with *≤1000 inhabitant/km<sup>2</sup>*
- Cities with *>1000 inhabitant/km<sup>2</sup>*

Categorization in (3 categories):

- Cities with *≤500 inhabitant/km<sup>2</sup>*
- Cities with *500–1500 inhabitant/km<sup>2</sup>*
- Cities with *>1500 inhabitants/km<sup>2</sup>*

Secondly, bivariate and partial correlations verify relationships (or associations) between variables under study, and measure the degree of association. After that, the null hypothesis ( $H_0$ ) and alternative hypothesis ( $H_1$ ) of the significance test for correlation is computed, considering two-tailed significance test.

Thirdly, the statistical analysis considers the relation between independent and dependent variables. In particular, the dependent variable (number of infected individuals across Italian provincial capitals) is a linear function of a single explanatory variable given by total days exceeding the limits set for PM<sub>10</sub> or ozone across Italian province capitals. Dependent variables have a *lag of 1 years* in comparison with explanatory variables to consider temporal effects of air pollution predictor on environment and health of population in the presence of viral infectivity by COVID-19 in cities of Italy ( $N=55$ ).

The specification of the linear relationship is a *log-log* model:

$$\log y_t = \alpha + \beta \log x_{t-1} + u \quad (1)$$

$\alpha$  is a constant;  $\beta$  = coefficient of regression;  $u$  = error term

$y$  = dependent variable is number of infected individuals in cities  
 $x$  = explanatory variable is a measure of air pollution, given by total days exceeding the limits set for PM<sub>10</sub> or ozone in cities

This study also extends the statistical analysis with a multiple regression model to assess how different indicators can affect the diffusion of COVID-19. The specification of the linear relationship is also a

**Table 1**  
Descriptive statistics of Hinterland and Coastal Italian province capitals.

	Days exceeding limits set for PM <sub>10</sub> or ozone 2018	Infected 17th March 2020	Infected 7th April 2020	Density inhabitants/km <sup>2</sup> 2019	Temp °C Feb–Mar 2020	Moisture % Feb–Mar 2020	Wind km/h Feb–Mar 2020	Rain days Feb–Mar 2020	Fog days Feb–Mar 2020
<i>Hinterland cities</i>									
N = 45									
Mean	80.40	497.00	2201.44	1480.11	9.11	68.31	8.02	4.81	4.14
Std. Deviation	41.66	767.19	2568.34	1524.25	2.20	7.68	3.69	2.38	3.13
<i>Coastal cities N = 10</i>									
Mean	59.40	171.30	944.70	1332.80	10.61	74.40	11.73	5.10	3.25
Std. Deviation	38.61	164.96	718.17	2463.04	2.20	7.38	2.60	2.71	3.68

log-log model as follows:

$$\log y_t = \alpha + \beta_1 \log x_{1,t-1} + \beta_2 \log x_{2,t-1} + u \tag{2}$$

$y$  = dependent variable is number of infected individuals in cities  
 $x_1$  = a measure of air pollution, given by total days exceeding the limits set for PM<sub>10</sub> or ozone in cities  
 $x_2$  = density of cities, given by inhabitants/km<sup>2</sup>

In addition, Eq. (2) is performed using data of infected individuals at  $t = 17$ th March 2020 (i.e., in the starting phase of diffusion of the COVID-19 outbreak in Italy), and at  $t + 23$  days = 7th April 2020 (i.e., in the phase of maturity of diffusion of Coronavirus infection, during lockdown and quarantine) to assess the coefficient of two explanatory variables in the transmission dynamics of COVID-19. The estimation of Eq. (2) is performed using hierarchical multiple regression, a variant of the basic multiple regression procedure that allows to specify a fixed order of entry for variables to control for the effects of covariates and to test the effects of certain predictors independent of the influence of others. The R<sup>2</sup> changes here are important to assess the predictive role of additional variables. The adjusted R-square and standard error of the estimates are useful as comparative measures to assess results between models. The F-test evaluates if the independent variables reliably predict the dependent variable.

Moreover, the relationship is also specified with a quadratic model as follows:

$$y_t = \alpha + \beta x_{t-1} + \beta (x_{t-1})^2 + u \tag{3}$$

The goal here is to apply an optimization approach to calculate the minimum of Eq. (3) that suggests the maximum number of days that cities can exceed the limits set for PM<sub>10</sub> or ozone. Beyond this critical estimated point, there are environmental inconsistencies of air pollution associated with meteorological conditions that can trigger a take-off of viral infectivity with damages for health of population and economic system in the short and long run. In addition, the max number of days

that cities can exceed the limit set for air pollution and that minimizes the number of infected individuals can suggest implications of proactive strategies and critical decisions of crisis management to cope with future epidemics similar to COVID-19 in society.

Finally, if  $y_t$  is number of infected individuals referred to a specific day, and Eq. (1) is calculated for each day changing dependent variable by using data of infected individuals at day  $t = 1$ , day  $t = 2$ , day  $t = 3, \dots$ , day  $t = n$ , the variation of coefficients of regression  $b_i$  ( $i = 1, \dots, n$ ), during quarantine and lockdown in Italy, can be used to assess with a good approximation the possible end of epidemic wave as follows:

$$\Delta b_{t+1} - \Delta b_t = \Delta b1$$

$$\Delta b_{t+2} - \Delta b_{t+1} = \Delta b2$$

...

$$\Delta b_{t+n} - \Delta b_{t+n-1} = \Delta bt + n$$

$$\text{Average reduction is } \overline{\Delta b} = \delta = \frac{\sum_{i=1}^n \Delta b_i}{n}$$

Decreasing  $b_i$  at day 1, day-by-day, of the constant value  $\overline{\Delta b}$ , the  $i$ -th day when  $b_i$  is close to 0 (zero), it suggests with a good approximation the ending tail of epidemic wave, *ceteris paribus* (meaning "other things equal") quarantine and lockdown. Ordinary Least Squares (OLS) method is applied for estimating the unknown parameters in linear regression models [1–3]. Statistical analyses are performed with the Statistics Software SPSS® version 24.

### 3. Results

Descriptive statistics of variables in log scale, based on Italian province capitals ( $N = 55$ ), indicate normal distributions that are appropriate to apply parametric analyses.

Table 1 shows that *hinterland cities* have a average higher level of infected individuals than coastal cities. Hinterland cities have also a higher

**Table 2**  
Descriptive statistics of cities with higher or lower wind speed.

	Days exceeding limits set for PM <sub>10</sub> or ozone 2018	Infected 17th March 2020	Infected 7th April 2020	Density inhabitants/km <sup>2</sup> 2019	Temp °C Feb–Mar 2020	Moisture % Feb–Mar 2020	Wind km/h Feb–Mar 2020	Rain days Feb–Mar 2020	Fog days Feb–Mar 2020
<i>Cities with lower wind speed</i>									
N = 41									
Mean	84.32	536.20	2383.66	1517.41	9.05	68.23	7.30	4.56	4.18
Std. Deviation	43.31	792.84	2624.03	1569.70	2.12	7.50	2.77	2.33	2.94
<i>Cities with higher wind speed</i>									
N = 14									
Mean	53.93	149.57	770.14	1265.64	10.36	72.89	12.77	5.75	3.39
Std. Deviation	25.87	153.55	633.21	2108.31	2.43	8.37	3.46	2.56	4.00

**Table 3**  
Descriptive statistics of Northern and Central-Southern Italian province capitals.

	Days exceeding limits set for PM <sub>10</sub> or ozone 2018	Infected 17th March 2020	Infected 7th April 2020	Density inhabitants/km <sup>2</sup> 2019	Temp °C Feb–Mar 2020	Moisture % Feb–Mar 2020	Wind km/h Feb–Mar 2020	Rain days Feb–Mar 2020	Fog days Feb–Mar 2020
<i>Northern cities N = 45</i>									
Mean	80.51	515.60	2321.20	1448.00	9.05	69.40	7.89	4.80	4.31
Std. Deviation	42.67	759.18	2504.57	1538.10	1.97	7.61	3.15	2.42	3.06
<i>Central-Southern cities N = 10</i>									
Mean	58.90	87.60	405.80	1477.30	10.88	69.50	12.31	5.15	2.50
Std. Deviation	32.36	129.98	444.85	2424.50	2.92	9.64	4.44	2.52	3.65

level of air pollution (average days per year) than coastal cities, in a meteorological context of lower average temperature, lower average wind speed, lower number of rain days and lower level of moisture % than coastal cities (in February–March, 2020).

Table 2 shows that cities with low wind speed (7.3 km/h) have also an average higher level of infected individuals than cities having higher wind speed (average of 12.77 km/h in February–March, 2020). Cities with lower intensity of wind speed have also a higher level of air pollution (average days per year), in a meteorological context of lower average temperature, less rain days, lower level of moisture % and higher average number of days of fog.

Table 3 shows that cities in the central and southern part of Italy have a lower number of infected individuals than cities in North Italy. This result is in an environment with lower level of air pollution (average days per year), higher average temperature, higher average intensity of wind speed, higher number of rain days and lower level of moisture %.

Table 4 confirms previous results considering cities with >100 days exceeding limits set for PM<sub>10</sub> or ozone: they have, versus cities with less than 100 days of air pollution, a very high level of infected individuals, in an environment with a higher average density of population, lower average intensity of wind speed, lower average temperature, higher average level of moisture % and higher number of days of fog.

Tables 5–6 show results considering the categorization of cities per density of population (individuals/km<sup>2</sup>). Results reveal that average number of infected individuals increases with average density of people/km<sup>2</sup>, but with an arithmetic growth, in comparison to geometric growth of the number of infected individuals with other proposed categorizations of cities. These findings suggest that density of population per km<sup>2</sup> is important for transmission dynamics but other factors may support the acceleration of viral infectivity by COVID-19 in association with higher probability of interpersonal contacts in cities having high population density.

In short, results suggest that among Italian province capitals, the number of infected people is higher in: cities with >100 days exceeding limits set for PM<sub>10</sub> or ozone, located in hinterland zones, having a low wind speed and lower temperature in °C.

Table 7 shows the association between variables of infected individuals on 17th March and 7th April 2020, and other variables: a correlation higher than 60% (*p*-value < 0.001) is between air pollution and infected individuals, a lower coefficient of correlation is between density of population and infected individuals (*r* = 48–53%, *p*-value < 0.001). Results also show a negative correlation between number of infected individuals and intensity of wind speed (*r* = –38% and –31%, *p*-value < 0.05 on 17th March and 7th April 2020 respectively):

**Table 4**  
Descriptive statistics of Italian provincial capitals according to days exceeding the limits set for PM<sub>10</sub> or ozone.

	Days exceeding limits set for PM <sub>10</sub> or ozone 2018	Infected 17th March 2020	Infected 7th April 2020	Density inhabitants/km <sup>2</sup> 2019	Temp °C Feb–Mar 2020	Moisture % Feb–Mar 2020	Wind km/h Feb–Mar 2020	Rain days Feb–Mar 2020	Fog days Feb–Mar 2020
<i>Cities with &gt;100 days exceeding limits set for PM<sub>10</sub>, N = 20</i>									
Mean	125.25	881.70	3650.00	1981.40	9.19	71.30	7.67	4.80	4.88
Std. Deviation	13.40	1010.97	3238.82	1988.67	1.46	7.63	2.86	2.57	2.65
<i>Cities with &lt;100 days exceeding limits set for PM<sub>10</sub>, N = 35</i>									
Mean	48.77	184.11	1014.63	1151.57	9.49	68.34	9.28	4.90	3.47
Std. Deviation	21.37	202.76	768.91	1466.28	2.62	7.99	4.15	2.37	3.44

**Table 5**  
Descriptive statistics of Italian provincial capitals according to density per km<sup>2</sup> (2 categories).

	Days exceeding limits set for PM <sub>10</sub> or ozone 2018	Infected 17th March 2020	Infected 7th April 2020	Density inhabitants/km <sup>2</sup> 2019	Temp °C Feb–Mar 2020	Moisture % Feb–Mar 2020	Wind km/h Feb–Mar 2020	Rain days Feb–Mar 2020	Fog days Feb–Mar 2020
<i>Cities with ≤ 1000 inhabitant/km<sup>2</sup> N = 30</i>									
Mean	64.37	248.37	1144.20	510.77	10.01	69.61	9.28	4.08	3.75
Std. Deviation	39.25	386.95	1065.99	282.11	1.95	10.30	4.41	2.37	3.40
<i>Cities with &gt; 1000 inhabitant/km<sup>2</sup> N = 25</i>									
Mean	91.24	665.08	2967.44	2584.40	8.63	69.19	7.99	5.80	4.26
Std. Deviation	40.24	919.70	3092.46	2000.63	2.40	3.59	2.79	2.17	3.03

**Table 6**  
Descriptive statistics of Italian provincial capitals according to density per km<sup>2</sup> (3 categories).

	Days exceeding limits set for PM <sub>10</sub> or ozone 2018	Infected 17th March 2020	Infected 7th April 2020	Density inhabitants/km <sup>2</sup> 2019	Temp °C Feb–Mar 2020	Moisture % Feb–Mar 2020	Wind km/h Feb–Mar 2020	Rain days Feb–Mar 2020	Fog days Feb–Mar 2020
<i>Cities with &lt;500 inhabitant/km<sup>2</sup></i>									
<i>N = 17</i>									
Mean	52.82	116.12	695.35	312.76	9.88	71.12	9.52	4.44	4.41
Std. Deviation	36.87	128.13	570.58	161.34	2.12	8.91	5.73	2.79	3.79
<i>Cities with 500–1500 inhabitant/km<sup>2</sup> N = 22</i>									
Mean	84.32	430.91	1775.73	951.32	9.04	68.50	8.37	4.34	3.75
Std. Deviation	37.28	476.29	1122.02	277.77	2.65	9.17	2.33	2.06	2.99
<i>Cities with &gt;1500 inhabitant/km<sup>2</sup></i>									
<i>N = 16</i>									
Mean	91.19	789.00	3601.56	3355.44	9.33	68.86	8.26	6.03	3.84
Std. Deviation	43.29	1103.03	3697.89	2151.27	1.81	4.32	2.79	2.19	3.03

in fact, wind speed cleans air from pollutants that are associated with possible transmission dynamics of viral infectivity (COVID-19) as it will be explained later.

Table 8 confirms high correlation between air pollution and infected individuals on 17th March and 7th April 2020, controlling meteorological factors of cities under study ( $r > 59\%$ ,  $p$ -value  $< 0.001$ ).

Partial correlation in Table 9 suggests that controlling density of population on 17th March and 7th April 2020, number of infected people is associated with air pollution ( $r \geq 48\%$ ,  $p$ -value  $< 0.001$ ), whereas controlling air pollution, the correlation between density of population in cities and infected individuals is lower ( $r = 28$ – $36\%$ ). The reduction of coefficients of correlation ( $r$ ) between infected individuals and air pollution from 17th March to 7th April 2020, and the increase of the association between infected people and density of people in cities over the same time period, controlling mutual variables, suggest that air pollution in

cities seems to be a important factor in the initial phase of transmission dynamics of COVID-19 (i.e., 17th March 2020). In the phase of the maturity of transmission dynamics (7th April 2020), with lockdown that reduces air pollution, the mechanism of air pollution-to-human transmission of Coronavirus infection (*airborne viral infectivity*) reduces intensity, whereas coefficient of human-to-human transmission increases.

These findings are confirmed with hierarchical regression that also reveals how air pollution in cities seems to be a driving factor of transmission dynamics in the initial phase of diffusion of COVID-19 (17th March 2020). In the phase of the maturity of transmission dynamics of COVID-19 (7th April 2020), the determinant of air pollution is important to support the diffusion of viral infectivity of this airborne disease but it reduces the intensity, whereas the factor of human-to-human transmission increases, *ceteris paribus* (Table 10). This result reveals

**Table 7**  
Correlation.

<i>N = 55</i>	<i>Log Days exceeding limits set for PM<sub>10</sub> or ozone 2018</i>	<i>Log Density inhabitants/km<sup>2</sup> 2019</i>	<i>Temp °C Feb–Mar 2020</i>	<i>Moisture % Feb–Mar 2020</i>	<i>Wind km/h Feb–Mar 2020</i>
<i>Log infected 17th March 2020</i>					
Pearson correlation	0.643**	0.484**	−0.117	0.005	−0.377**
Sig. (2-tailed)	0.001	0.001	0.397	0.970	0.005
<i>N = 55</i>	<i>Days exceeding limits set for PM<sub>10</sub> or ozone 2018</i>	<i>Density inhabitants/km<sup>2</sup> 2019</i>	<i>Temp °C Feb–Mar 2020</i>	<i>Moisture % Feb–Mar 2020</i>	<i>Wind km/h Feb–Mar 2020</i>
<i>Log infected 7th April, 2020</i>					
Pearson correlation	0.604***	0.533**	−0.259	0.026	−0.310*
Sig. (2-tailed)	0.001	0.001	0.056	0.853	0.021

Note:

\*\*\* Correlation is significant at the 0.001 level (2-tailed).

\*\* Correlation is significant at the 0.01 level (2-tailed).

\* Correlation is significant at the 0.05 level (2-tailed).

**Table 8**  
Partial correlation.

Control Variables Temp °C Moisture % Wind km/h Feb–Mar 2020	Pearson correlation	<i>Log infected 17th March 2020</i>	<i>Log infected 7th April 2020</i>
	<i>Log days exceeding limits set for PM<sub>10</sub> or ozone 2018</i>	0.607	0.586
	Sig. (2-tailed)	0.001	0.001
	N	50	50

**Table 9**  
Partial Correlation.

Control variables Log density inhabitants/km <sup>2</sup> 2019	Pearson correlation	Log infected 17th March 2020	Log infected 7th April 2020
	Log days exceeding limits set for PM <sub>10</sub> or ozone 2018	0.542	0.479
	Sig. (2-tailed)	0.001	0.001
	N	52	52
Control variables Log days exceeding limits set for PM <sub>10</sub> or ozone 2018	Pearson correlation	Log infected 17th March 2020	Log infected 7th April, 2020
	Log density inhabitants/km <sup>2</sup> 2019	0.279	0.362
	Sig. (2-tailed)	0.041	0.007
	N	50	50

that transmission dynamics of COVID-19 is due to human-to-human transmission but the factor of *air pollution-to-human transmission of viral infectivity* supports a substantial growth of spatial diffusion of vital infectivity.

Table 11 shows results of the transmission dynamics of COVID-19 considering the interpersonal contacts, measured with density of population in cities understudy. In short, results suggest that density of population explains the number of infected individuals, increasing the probability of human-to-human transmission. However, if we decompose the sample in the cities with ≤100 days exceeding limits set for PM<sub>10</sub> or ozone and cities with >100 days exceeding limits set for PM<sub>10</sub> or ozone, then the expected increase of number of infected individuals is higher in cities having more than 100 days exceeding limits set for PM<sub>10</sub> or ozone per year. In particular,

- Cities with ≤100 days exceeding limits set for PM<sub>10</sub>, an increase of 1% in density of population, it increases the expected number of infected individuals by about 0.25%
- Cities with >100 days exceeding limits set for PM<sub>10</sub>, an increase of 1% in density of population, it increases the expected number of infected individuals by about 85%!

The statistical output of Table 11 is schematically summarized as follows:

	Cities with ≤100 days exceeding limits set for PM <sub>10</sub> or ozone	Cities with >100 days exceeding limits set for PM <sub>10</sub> or ozone
Density of population (coefficient of regression β1)	0.25 (p < 0.05)	0.85 (p < 0.001)
F	4.457 (p < 0.05)	17.168 (p < 0.001)
R <sup>2</sup>	11.9%	49%

Fig. 1 confirms, *ictu oculi* (in the blink of an eye), that the coefficient of regression in cities with >100 days exceeding limits set for PM<sub>10</sub> or ozone is much bigger than coefficient in cities with ≤100 days exceeding limits set for PM<sub>10</sub> or ozone, suggesting that the mechanism of *air pollution-to-human transmission* is definitely important to explain the transmission dynamics of COVID-19. Fig. 1A in Appendix confirms this result that viral infectivity of COVID-19 increases with the mechanism of air pollution-to-human transmission (*airborne viral infectivity*), but the rate of growth of viral infectivity is also supported by a high density of population that sustains the mechanism of human-to-human transmission. The policy implications here are clear: COVID-19 has reduced

**Table 10**  
Parametric estimates of the relationship of Log Infected 17 March and 7th April 2020 on Log Days exceeding limits set for PM<sub>10</sub> and Log Density inhabitants/km<sup>2</sup> 2019 (hierarchical regression).

	Model 1A Step 1: Air pollution		Model 2A Step 2: Air pollution and Interpersonal contacts		Model 1B Step 1: Air pollution		Model 2B Step 2: Air pollution and Interpersonal contacts	
	Log days exceeding limits set for PM <sub>10</sub> , 2018	Log density inhabitants/km <sup>2</sup> 2019	Log days exceeding limits set for PM <sub>10</sub> , 2018	Log density inhabitants/km <sup>2</sup> 2019	Log days exceeding limits set for PM <sub>10</sub> , 2018	Log density inhabitants/km <sup>2</sup> 2019	Log days exceeding limits set for PM <sub>10</sub> , 2018	Log density inhabitants/km <sup>2</sup> 2019
Log infected 17th March 2020								
Constant α	-1.168	-2.168			2.552**			1.538
(St. Err.)	(1.053)	(1.127)			(0.822)			(0.854)
Coefficient β 1	1.526***	1.266***			1.077***			0.813***
(St. Err.)	(0.250)	(0.272)			(0.195)			(0.206)
Coefficient β 2		0.309*						0.314**
(St. Err.)		(0.148)						(0.111)
F	37.342***b	22.059***c			30.480***b			21.130***c
R <sup>2</sup>	0.413	0.459			0.365			0.448
ΔR <sup>2</sup>	0.413	0.046			0.385			0.083
ΔF	37.342***	4.388*			30.480***			7.843**

b = predictors: Log Days exceeding limits set for PM<sub>10</sub> or ozone in 2018

c = predictors: Log Days exceeding limits set for PM<sub>10</sub> or ozone in 2018 year; Log Density inhabitants/km<sup>2</sup> in 2019.

\*\*\* p-Value < 0.001.

\*\* p-Value < 0.01.

\* p-Value < 0.05.

**Table 11**  
Parametric estimates of the relationship of Log Infected 7th April 2020 on Log Density inhabitants/km<sup>2</sup> 2019, considering the groups of cities with days exceeding limits set for PM<sub>10</sub> or ozone.

↓Dependent variable	Model of cities with <100 days exceeding limits set for PM <sub>10</sub> or ozone, 2018	↓Dependent variable	Model of cities with >100 days exceeding limits set for PM <sub>10</sub> or ozone, 2018
	Log density inhabitants/km <sup>2</sup> 2019		Log density inhabitants/km <sup>2</sup> 2019
Log infected 7th April, 2020		Log infected 7th April, 2020	
Constant α	4.976	Constant α	1.670
(St. Err.)	(0.786)	(St. Err.)	(1.491)
Coefficient β 1	0.252*	Coefficient β 1	0.849***
(St. Err.)	(0.120)	(St. Err.)	(0.205)
R <sup>2</sup> (St. Err. of Estimate)	0.119 (0.812)	R <sup>2</sup> (St. Err. of Estimate)	0.488(0.738)
F	4.457*	F	17.168***

Note: Explanatory variable: Log Density inhabitants/km<sup>2</sup> in 2019.

\*\*\* p-Value < 0.001.

\* p-Value < 0.05.

transmission dynamics on population in the presence of lower level of air pollution and specific environments based on a higher wind speed (e.g., in South Italy). Hence, the effect of accelerated transmission dynamics of COVID-19 cannot be explained without accounting for the level of air pollution and other geo-environmental conditions of the cities, such as high wind speed and temperature.

A main question for supporting a strategy to prevent future epidemics similar to COVID-19 is: What is the maximum number of days that cities can exceed the limits set for PM<sub>10</sub> or ozone per year, before that the combination between air pollution and meteorological conditions triggers a take-off of viral infectivity (epidemic diffusion) with damages for health of population, economy and society?

The function based on Table 12 is:

$$y = 1844.216 - 46.221x + 0.485x^2$$

y = number of infected individuals on 7th April 2020

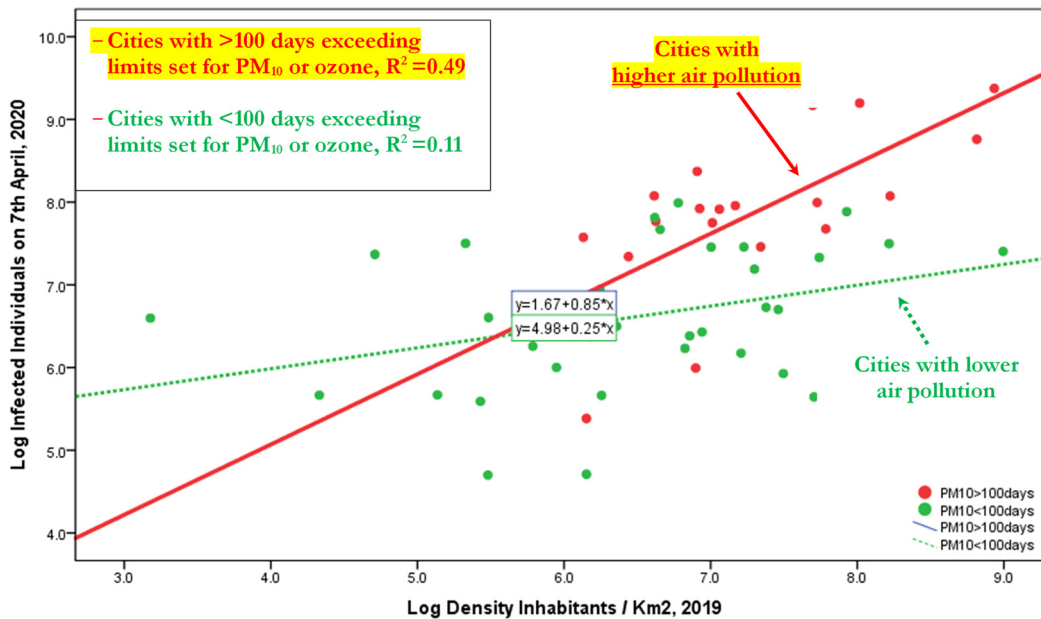
x = days exceeding limits of PM<sub>10</sub> or ozone in Italian provincial capitals

The minimization of this function is performed imposing first derivative (y') equal to zero (0):

$$Dy/x = y' = -46.221 + 0.97x = 0$$

x = 46.221/0.97 = 47.65, i.e., 48 days exceeding limits of PM<sub>10</sub> or ozone in Italian provincial capitals

This finding suggests that the max number of days that Italian provincial capitals can exceed per year the limits set for PM<sub>10</sub> (particulate matter 10 μm or less in diameter) or for ozone, considering the meteorological conditions, is about 48 days (Fig. 2). Beyond this critical point, the analytical and geometrical output suggests that environmental inconsistencies, because of the combination between air pollution and meteorological conditions, trigger a take-off of viral infectivity



**Fig. 1.** Regression line of Log Infected individuals 7th April, 2020 on Log Density inhabitants/km<sup>2</sup> 2019, considering the groups of cities with days exceeding limits set for PM<sub>10</sub> or ozone <, or ≥100 days. Note: This result reveals that transmission dynamics of COVID-19 is due to two mechanisms given by: human-to-human transmission (based on density of population) and air pollution-to-human transmission (airborne viral infectivity); in particular, in polluting cities, the accelerated diffusion of viral infectivity is also due to mechanism of air pollution-to-human transmission that may have a stronger effect than human-to-human transmission!



**Table 12**Parametric estimates of the relationship of Infected individuals 7th April 2020 on days exceeding limits set for PM<sub>10</sub> or ozone (regression analysis, quadratic model).

Response variable: infected individuals 7th April 2020				
Explanatory variable	B	St. Err.	R <sup>2</sup> (St. Err. of the Estimate)	F (sign.)
- Days exceeding limits set for PM <sub>10</sub>	-46.221	36.06	0.37 (1893.27)	16.94 (0.001)
- (Days exceeding limits set for PM <sub>10</sub> ) <sup>2</sup>	0.485*	0.217		
Constant	1844.216	1208.11		

Note:

\* *p*-Value = 0.030 < 5%.

(epidemic diffusion) with damages for health of population, economy and society.

Finally, the reduction of unstandardized coefficient of regression in Table 13, from 17th March to 7th April 2020, suggests a deceleration of the diffusion of COVID-19 over time and space. The question is: how many days are necessary to stop the epidemic, *ceteris paribus* (quarantine and lockdown)?

Let, the average reduction of the coefficients of regression *B<sub>i</sub>* at 7th April 2020 equal to  $\delta = -0.0236$ , let the coefficient *B* at 7th April 2020 equal to 1.077, the date when *B* is close to 0 (zero) in Italy, with a constant reduction day by day of the value  $\delta$  from 7th April 2020 onwards, is about 22 May 2020 or thereabouts (this date is a good approximation of when the coefficient *B* may be lower than 0.05, suggesting a very low number of infected individuals in Italy).

#### 4. Phenomena explained: the accelerated diffusion of COVID-19

Considering the results just mentioned, the fundamental questions are:

*Why did this Coronavirus infection spread so rapidly in Italy (and other countries)?*

*How is the link between geographical and environmental factors and accelerated diffusion of COVID-19 in specific regions?*

Fig. 3 shows COVID-19 outbreak in North Italy with number of infected individuals and days exceeding the limits set for PM<sub>10</sub> or for ozone. Statistical analyses here for *N* = 55 Italian provincial capitals confirm the significant association between high diffusion of viral infectivity of Coronavirus Disease 2019 and air pollution. Studies show that the diffusion of viral infectivity depends on the interplay between host factors and environment (Neu and Mainou, 2020; Morawska and Cao,

2020). In this context, it is critical to explain how air quality can affect viral dissemination at national and global level (Das and Horton, 2017). Many ecological studies have examined the association between the incidence of invasive pneumococcal disease, respiratory virus circulation and various climatic factors (McCullers, 2006; Jansen et al., 2008). These studies show that in temperate climates, the epidemiology of invasive pneumococcal disease has a peak of incidence in winter months (Dowell et al., 2003; Kim et al., 1996; Talbot et al., 2005).

Brunekreef and Holgate (2002a,b) argue that, in addition to climate factors, the health effects of air pollution have been subject to intense investigations in recent years. Air pollution is ubiquitous in manifold urban areas of developed and developing nations. Air pollution has gaseous components and particulate matter (PM). The former includes ozone (O<sub>3</sub>), volatile organic compounds (VOCs), carbon monoxide (CO) and nitrogen oxides (NO<sub>x</sub>) that generate inflammatory stimuli on the respiratory tract of individuals (Glencross et al., 2020). PM has a complex composition that includes metals, elemental carbon and organic carbon (both in hydrocarbons and peptides), sulphates and nitrates, etc. (Ghio et al., 2012; Wooding et al., 2019).

Advanced countries, such as in Europe, have more and more smog because of an unexpected temperature inversion, which traps polluting emissions from the city near ground-level mainly in winter season. The ambient pollution mixes with moisture in the air to form a thick fog that affects the health of people in the city (Wang et al., 2016; Bell et al., 2004). The exposure to pollutants, such as airborne particulate matter and ozone, generates respiratory and cardiovascular diseases with increases in mortality and hospital admissions (cf., Langrish and Mills, 2014). Wei et al. (2020) analyze the effect of heavy aerosol pollution in northern China (characterized by high PM<sub>2.5</sub> concentrations in a wide geographical area) that impacts on environmental ecology, climate change and public health (cf., Liu et al., 2017, 2018; Jin et al., 2017). The biological components of air pollutants and bio aerosols

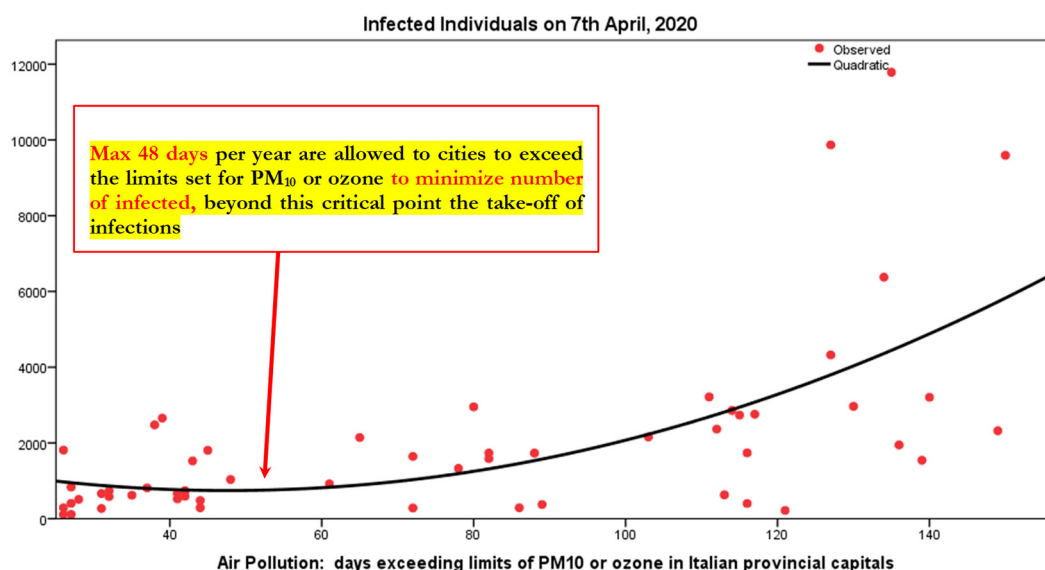


Fig. 2. Estimated relationship of number of infected on days exceeding limits of PM<sub>10</sub> in Italian provincial capitals (Quadratic model).

**Table 13**  
Coefficient of regression of the linear model per day based on Eq. (1) and daily change.

Day	Unstandardized coefficient B	Standard Error	Sign.	R <sup>2</sup>	$\Delta = B_i - B(i - 1)$
17th March, 2020	1.526	0.250	0.001	0.400	
19	1.362	0.238	0.001	0.370	-0.1640
21	1.360	0.234	0.001	0.377	-0.0020
22	1.340	0.232	0.001	0.375	-0.0200
23	1.322	0.231	0.001	0.370	-0.0180
24	1.320	0.228	0.001	0.376	-0.0020
25	1.285	0.227	0.001	0.364	-0.0350
26	1.287	0.223	0.001	0.375	+0.0020
27	1.291	0.221	0.001	0.380	+0.0040
28	1.289	0.202	0.001	0.424	-0.0020
29	1.246	0.216	0.001	0.375	-0.0430
30	1.236	0.209	0.001	0.386	-0.0100
31	1.143	0.198	0.001	0.375	-0.0930
1st April, 2020	1.162	0.201	0.001	0.376	+0.0190
2	1.129	0.196	0.001	0.373	-0.0330
3	1.127	0.194	0.001	0.377	-0.0020
4	1.076	0.194	0.001	0.355	-0.0510
5	0.982	0.192	0.001	0.317	-0.0940
6	1.074	0.191	0.001	0.361	+0.0920
7	1.077	0.195	0.001	35.300	+0.0030
				Arithmetic mean	-0.0236
				$\Delta = \delta =$	

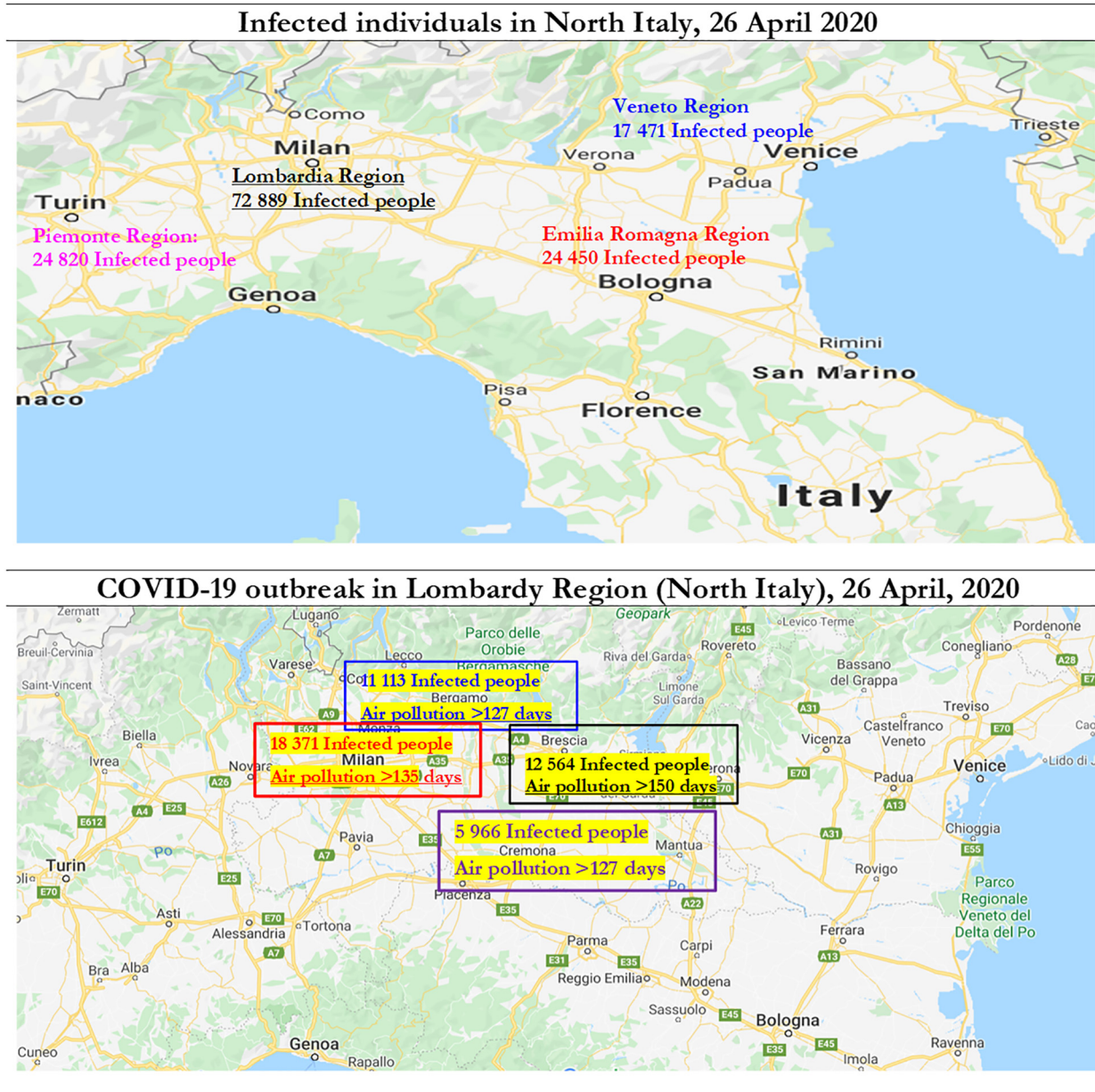
also include bacteria, viruses, pollens, fungi, and animal/plant fragments (Després et al., 2012; Fröhlich-Nowoisky et al., 2016; Smets et al., 2016). Studies show that during heavy aerosol pollution in Beijing (China), 50%–70% of bacterial aerosols are in sub micrometer particles, 0.56–1 mm (T. Zhang et al., 2019; cf., Zhang et al., 2016). As bacteria size typically ranges from 0.5 to 2.0 mm (Després et al., 2012), they can form clumps or attach to particles and transport regionally between terrestrial, aquatic, atmospheric and artificial ecosystems (Smets et al., 2016). Moreover, because of regional bio aerosol transportation, harmful microbial components and bacterial aerosols have dangerous implications on human health and also plantation (cf., Van Leuken et al., 2016). Harmful bio aerosol components (including pathogens, antibiotic-resistant bacteria and endotoxins) can cause severe respiratory and cardiovascular diseases in society (Charmi et al., 2018). In fact, the concentration of microbes, pathogens and toxic components significantly increases during polluted days, compared to no polluted days (Liu et al., 2018). In addition, airborne bacterial community structure changes with pollutant concentration, which may be related to bacterial sources and multiplication in the air (T. Zhang et al., 2019). Studies also indicate that microbial community composition and bioactivity are significantly affected by particle concentration (Liu et al., 2018). To put it differently, the atmospheric particulate matter harbors more microbes during polluted days than sunny or clean days (Wei et al., 2016). These studies can explain one of the driving factors of higher diffusion of COVID-19 in the industrialized regions of Nord Italy, rather than in other part of Italy (Tables 1–6). In fact, viable bio aerosol particles and high microbial concentration in particulate matter play their non-negligible role during air pollution and transmission dynamics of viral infectivity (T. Zhang et al., 2019; Morawska and Cao, 2020). For instance, studies on airborne bacteria in PM<sub>2.5</sub> from the Beijing-Tianjin-Hebei regions in China reveal that air pollutants are main factors in shaping bacterial community structure (Gao et al., 2017). Xie et al. (2018) indicate that total bacteria concentration is higher in moderately polluted air rather than in clean or heavily polluted air. Liu et al. (2018) argue that bacterial concentration is low in heavily pollution of PM<sub>2.5</sub> and PM<sub>10</sub>, whereas the pathogenic bacteria concentration is very high in heavy and moderate pollution. Sun et al. (2018) study bacterial community during low and high particulate matter (PM) pollution and find out that predominant species vary with PM concentration. In general,

bio aerosol concentrations are influenced by complex factors, such as emission sources, terrain, meteorological conditions and other climate factors (Zhai et al., 2018). Wei et al. (2020) investigate the differences between inland and coastal cities in China (Jinan and Weihai, respectively) to explain the influence of topography, meteorological conditions and geophysical factors on bio aerosol. Results suggest that from clean days to high polluted days, bacterial community structure is influenced by bacterial adaptation to pollutants, chemical composition of pollutants and meteorological conditions (cf., Sun et al., 2018). Moreover, certain bacteria from Proteobacteria and Deinococcus-Thermus have high tolerance towards environmental stresses and can adapt to extreme environments. As a matter of fact, bacilli can survive to harsh environments by forming spores. Moreover, certain bacteria with protective mechanisms can survive in highly polluted environments, while other bacteria cannot withstand such extreme conditions. In particular, bacteria survive in the atmosphere adapting to ultraviolet exposure, reduced nutrient availability, desiccation, extreme temperatures and other factors. In short, in the presence of accumulated airborne pollutants, more microorganisms might be attached to particulate matter. Thus, in heavy or severe air pollution, highly toxic pollutants in PM<sub>2.5</sub> and PM<sub>10</sub> may inhibit microbial growth. Numerous studies also indicate that the combination between meteorological conditions and air pollution creates an appropriate environment for microbial community structure and abundance, and diffusion of viral infectivity (cf., Jones and Harrison, 2004). Zhong et al. (2018) argue that static meteorological conditions may explain the increase of PM<sub>2.5</sub>. In general, bacterial communities during aerosol pollution are influenced by bacterial adaptive mechanisms, particle composition, and meteorological conditions. The particles could also act as carriers, which have complex adsorption and toxicity effects on bacteria (Wei et al., 2020). Certain particle components are also available as nutrition for bacteria and the toxic effect dominates in heavy pollution. The bacterial adaptability towards airborne pollutants can cause bacterial survival or death for different species. Groulx et al. (2018) argue that microorganisms, such as bacteria and fungi in addition to other biological matter like endotoxins and spores, commingle with particulate matter air pollutants. Hence, microorganisms may be influenced by interactions with ambient particles leading to the inhibition or enhancement of viability (e.g., tolerance to variation in seasonality, temperature, humidity, etc.). Moreover, Groulx et al. (2018) claim that in the case of microbial agents of communicable disease, such as viruses, the potential interactions with pollution may have public health implications. Groulx et al. (2018, p. 1106) describe an experimental platform to investigate the implications of viral infectivity changes:

Preliminary evidence suggests that the interactions between airborne viruses and airborne fine particulate matter influence viral stability and infectivity ..... The development of a platform to study interactions between artificial bio aerosols and concentrated ambient particles provides an opportunity to investigate the direction, magnitude and mechanistic basis of these effects, and to study their health implications.... The interactions of PM<sub>2.5</sub> with  $\Phi 6$  bacteriophages decreased viral infectivity compared to treatment with HEPA<sup>2</sup>-filtered air alone; By contrast,  $\Phi X174$ , a non-enveloped virus, displayed increased infectivity when treated with PM<sub>2.5</sub> particles relative to controls treated only with HEPA-filtered air.

Thus, the variation in bacterial community structure is related to different pollution intensities. Wei et al. (2020) show that Staphylococcus increases with PM<sub>2.5</sub> and is the most abundant bacteria in moderate pollution. In heavy or severe pollution, bacteria that are adaptable to harsh environments, increase. In moderate pollution, PM<sub>2.5</sub> might harbor abundant bacteria, especially genera containing opportunistic

<sup>2</sup> High-efficiency particulate air, also known as high-efficiency particulate absorbing and high-efficiency particulate arrestance, is an efficiency standard of air filter.



**Fig. 3.** COVID-19 Outbreak (number of infected individual on 26 April 2020) and days exceeding the limits set for PM<sub>10</sub> or ozone.

pathogens. Therefore, effective measures should control health risks caused by bio aerosols during air pollution, especially for immunocompromised, such as elderly and other fragile individuals. This study may support the results here and explain the high mortality in Italy because of COVID-19 in individuals having previous respiratory and cardiovascular diseases and other disorders: in fact, the percentage of deaths compared to the total of those who tested positive for COVID-19 in Italy is of about 80% in individuals aged >70 years with comorbidities as of April 26, 2020 (Istituto Superiore Sanità, 2020; cf., WHO, 2020c). Papi et al. (2006) also indicate that chronic obstructive pulmonary disease (COPD) is significantly exacerbated by respiratory viral infections that cause reduction of forced expiratory volume in 1s (FEV1) and airway inflammation (cf., Gorse et al., 2006). Ko et al. (2007) report that the most prevalent viruses detected during acute exacerbations of COPD in Hong Kong were the influenza A virus and coronavirus. De Serres et al. (2009) also point out that the influenza virus frequently causes acute exacerbations of asthma and COPD. Moreover, the study by Wei et al. (2020) argues that air pollution in the coastal city of Weihai in China was slightly lower than the inland city of Jinan. This study

supports our results that coastal cities in Italy have a lower air pollution and the diffusion of viral infectivity by COVID-19 is lower than hinterland cities having a high level of air pollution (cf., Tab. 1). Wei et al. (2020, p. 9) also suggest that different air quality strategies should be applied in inland and coastal cities: coastal cities need start bioaerosol risk alarm during moderate pollution when severe pollution occurs in inland cities.

Other studies have reported associations between air pollution and reduced lung function, increased hospital admissions, increased respiratory symptoms and high asthma medication use (Simoni et al., 2015; Jalaludin et al., 2004). In this context, the interaction between climate factors, air pollution and increased morbidity and mortality of people and children from respiratory diseases is a main health issue in society (Darrow et al., 2014). Asthma is a disease associated with exposure to traffic-related air pollution and tobacco smoking (Liao et al., 2011). Many studies show that exposure to traffic-related outdoor air pollutants (e.g., PM<sub>10</sub> with an aerodynamic diameter  $\leq 10 \mu\text{m}$ , nitrogen dioxide NO<sub>2</sub>, carbon monoxide CO, sulfur dioxide SO<sub>2</sub>, and ozone O<sub>3</sub>) increases the risk of asthma or asthma-like symptoms (Shankardass

et al., 2009). Especially, high levels of PM<sub>10</sub> increases cough, lower respiratory disorders and lower peak expiratory flow (Ward and Ayres, 2004; Nel, 2005). Weinmayr et al. (2010) provide strong evidence that PM<sub>10</sub> may be an aggravating factor of asthma in children. Furthermore, asthma symptoms are exacerbated by air pollutants, such as diesel exhaust, PM<sub>10</sub>, NO<sub>2</sub>, SO<sub>2</sub>, O<sub>3</sub> and respiratory virus, such as adenovirus, influenza, parainfluenza and respiratory syncytial virus (Jaspers et al., 2005; Murdoch and Jennings, 2009; Murphy et al., 2000; Wong et al., 2009). The study by Liao et al. (2011) confirms that exacerbations of asthma have been associated with bacterial and viral respiratory tract infections and air pollution. Some studies focus on the effect of meteorology and air pollution on acute viral respiratory infections and viral bronchiolitis (a disease linked to seasonal changes in respiratory viruses) in the first years of life (Nenna et al., 2017; Ségala et al., 2008; Vandini et al., 2013, 2015). Carugno et al. (2018) analyze respiratory syncytial virus (RSV), the primary cause of acute lower respiratory infections in children: bronchiolitis. Results suggest that seasonal weather conditions and concentration of air pollutants seem to influence RSV-related bronchiolitis epidemics in Italian urban areas. In fact, airborne particulate matter may influence the children's immune system and foster the spread of RSV infection. This study also shows a correlation between short- and medium-term PM<sub>10</sub> exposures and increased risk of hospitalization because of RSV bronchiolitis among infants. In short, manifold environmental factors-(such as air pollution levels, circulation of respiratory viruses and colder temperatures)-induce longer periods of time spent indoors with higher opportunities for diffusion of infections between people. In fact, high diffusion of COVID-19 in North Italy is in winter period (February–March 2020). Studies also show that air pollution is higher during winter months and it has been associated with increased hospitalizations for respiratory diseases and other disorders (Ko et al., 2007a; Medina-Ramón et al., 2006). Moreover, oscillations in temperature and humidity may lead to changes in the respiratory epithelium, which increase susceptibility to infections (Deal et al., 1980). Murdoch and Jennings (2009) correlate the incidence rate of invasive pneumococcal disease (IPD) with fluctuations in respiratory virus activity and environmental factors in New Zealand, showing how incidence rates of IPD are associated with the increased activity of some respiratory viruses and air pollution. Another side effect of air pollution exposure is the high incidence of mumps. In fact, Hao et al. (2019) show that exposure to NO<sub>2</sub> and SO<sub>2</sub> is significantly associated with higher risk of developing mumps. Instead, Yang et al. (2020) show that the exposure of people to SO<sub>2</sub>, NO<sub>2</sub>, O<sub>3</sub>, PM<sub>10</sub> and PM<sub>2.5</sub> is associated with hand, foot, and mouth diseases. Moreover, the effect of air pollution in the cold season is higher than in the warm season. Shepherd and Mullins (2019) analyze the relationship between arthritis diagnosis in those over 50 and exposure to extreme air pollution in utero or infancy. In particular, this study links early-life air pollution exposure to later-life arthritis diagnoses, and suggests a particularly strong link for Rheumatoid arthritis.<sup>3</sup> Shepherd and Mullins (2019) also argue that exposure to smog and air pollution in the first year of life is associated with a higher incidence of arthritis later in life. Overall, then, these studies suggest complex relationships between people, meteorological conditions, air pollution and viral infectivity over time and space.

#### 4.1. Air pollution, immune system and genetic damages

The composition of ambient particulate matter (PM) varies both geographically and seasonally because of the mix of sources at any location across time and space. A vast literature shows short-term effects of

air pollution on health, but air pollution affects morbidity also in the long run (Brunekreef and Holgate, 2002a,b). The damages of air pollution on health can be explained as follows. Air pollutants exert toxic effects on respiratory and cardiovascular systems of people; in addition, ozone, oxides of nitrogen, and suspended particulates are potent oxidants, either through direct effects on lipids and proteins or indirectly through the activation intracellular oxidant pathways (Rahman and MacNee, 2000). Studies of animal and human in-vitro and in-vivo exposure have demonstrated the powerful oxidant capacity of inhaled ozone with activation of stress signaling pathways in epithelial cells (Bayram et al., 2001) and resident alveolar inflammatory cells (Mochitate et al., 2001). Lewtas (2007) shows that exposures to combustion emissions and ambient fine particulate air pollution are associated with genetic damages. Long-term epidemiologic studies report an increased risk of all causes of mortality, cardiopulmonary mortality, and lung cancer mortality associated with higher exposures to air pollution (cf., Coccia, 2012, 2014; Coccia and Wang, 2015). An increasing number of studies-(investigating cardiopulmonary and cardiovascular disorders)-shows potential causative agents from air pollution combustion sources.

About the respiratory activity, the adult lung inhales approximately 10–11,000 L of air per day, positioning the respiratory epithelium for exposure to high volumes of pathogenic and environmental insults. In fact, respiratory mucosa is adapted to facilitate gaseous exchange and respond to environmental insults efficiently, with minimal damage to host tissue. The respiratory mucosa consists of respiratory tract lining fluids; bronchial and alveolar epithelial cells; tissue resident immune cells, such as alveolar macrophages, dendritic cells, innate lymphoid cells and granulocytes; as well as adaptive memory T and B lymphocytes. In health, the immune system responds effectively to infections and neoplastic cells with a response tailored to the insult, but immune system must not respond harmfully to the healthy body and benign environmental influences. A well-functioning immune system is vital for a healthy body. Inadequate and excessive immune responses generate manifold pathologies, such as serious infections, metastatic malignancies and auto-immune conditions (Glencross et al., 2020). In particular, immune system consists of multiple types of immune cells that act together to generate (or fail to generate) immune responses. In this context, the relationships between ambient pollutants and immune system is vital to explain how air pollution causes diseases and respiratory disorders in the presence of Coronavirus infection. Glencross et al. (2020) show that air pollutants can affect different immune cell types, such as particle-clearing macrophages, inflammatory neutrophils, dendritic cells that orchestrate adaptive immune responses and lymphocytes that enact those responses. In general, air pollutants stimulate pro-inflammatory immune responses across multiple classes of immune cells. In particular, the association between high ambient pollution and exacerbations of asthma and chronic obstructive pulmonary disease (COPD) is consistent with immunological mechanisms. In fact, diseases can result from inadequate responses to infectious microbes allowing fulminant infections, inappropriate/excessive immune responses to microbes (leading to more collateral damages than the microbe itself), and inappropriate immune responses to self/environment, such as likely in the case of COVID-19. Glencross et al. (2020) also discuss evidence that air pollution can cause diseases by perturbing multicellular immune responses. Studies confirm associations between elevated ambient particulate matter and worsening of lung function in patients with COPD (Bloemsma et al., 2016), between COPD exacerbations and both ambient particulate matter and ambient pollutant gasses (Li et al., 2016; Papi et al., 2006) and similarly for asthma exacerbations with high concentration of ambient pollutants (Orellano et al., 2017; Zheng et al., 2015). In short, associations between ambient pollution and airways exacerbations are stronger than associations with development of chronic airways diseases. Glencross et al. (2020) argue that ambient pollutants can directly trigger cellular signaling pathways, and both cell culture studies and animal models have shown profound effects of air pollutants on every type of immune cell

<sup>3</sup> Rheumatoid arthritis is a chronic inflammatory disorder in which the body's immune system attacks its joints, and is one of the most common autoimmune diseases (Cooper and Stroehla, 2003). Moreover, rheumatoid arthritis is a major cause of disability that reduces patient's lifespan by 15–20% from the onset of the illness (Myllykangas-Luosujärvi et al., 1995; cf., Chang et al., 2016; De Roos et al., 2014; Farhat et al., 2011; Jung et al., 2017).

studied. In addition, studies suggest an action of air pollution to augment Th2 immune responses and perturb antimicrobial immune responses. This mechanism also explains the association between high air pollution and increased exacerbations of asthma – a disease characterized by an underlying Th2 immuno-pathology in the airways with severe viral-induced exacerbations. As inhaled air pollution deposits primarily on respiratory mucosa, potential strategies to reduce such effects may be based on vitamin D supplementation. Studies show that plasma levels of vitamin D, activated by ultraviolet B, are significantly higher in summer and fall than winter and spring season, in a latitude-dependent manner (Barger-Lux and Heaney, 2002). Since the temperature and hour of sun depend on latitude, Oh et al. (2010) argue that adequate activated vitamin D levels are also associated with diminished cancer risk and mortality in specific populations (Lim et al., 2006; Grant, 2002). For instance, breast cancer incidence correlates inversely with the levels of serum vitamin D and ultraviolet B exposure, which have the highest intensity in summer season. The relationships between adequate supply of vitamin D and low cancer risk are relevant to breast cancer, colon, prostate, endometrial, ovarian, and also lung cancer (Zhou et al., 2005). In the context of this study, and considering the negative effects of air pollution on human health and transmission dynamics of Coronavirus infection, summer season may have twofold effects to reduce diffusion of COVID-19:

- 1) hot and sunny weather increases temperature and improves air circulation in environment that can reduce air pollution, and as result alleviate transmission of COVID-19 (cf., Ko et al., 2007a; Medina-Ramón et al., 2006; Wei et al., 2020; Dowell et al., 2003; Kim et al., 1996; Talbot et al., 2005);
- 2) sunny days and summer season induce in population a higher production of vitamin D that reinforces and improves the function of immune system to cope with Coronavirus infection and other diseases (cf., Oh et al., 2010).

## 5. Discussion and suggested strategies to prevent future epidemics similar to COVID-19

At the end of 2019, medical professionals in Wuhan (China) were treating cases of pneumonia and respiratory disorders that had an unknown source (Li et al., 2020; Zhu and Xie, 2020; Chan et al., 2020; Backer et al., 2020). Days later, researchers confirmed that the illnesses were caused by a new coronavirus (COVID-19). By January 23, 2020, Chinese authorities had shut down transportation going into and out of Wuhan, as well as local businesses, in order to reduce the spread of the Severe Acute Respiratory Syndrome Coronavirus 2 (Centers for Disease Control and Prevention, 2020; Public Health England, 2020; Manuell and Cukor, 2011). It is the beginning of several quarantines set up in China and other countries around the world to cope with transmission dynamics of COVID-19. Quarantine is the separation and restriction of movement of people who have potentially been exposed to a contagious disease to ascertain if they become unwell, in order to reduce the risk of them infecting others (Brooks et al., 2019). In short, quarantine can generate a strong reduction of the transmission of viral infectivity. In the presence of COVID-19 outbreak in North Italy, Italian government has applied the quarantine and lockdown from 11 March 2020 to 3 May 2020 for all Italy, adding also some holidays thereafter. In fact, Italy was not able to prevent the diffusion of Coronavirus infection and has applied quarantine as a recovery strategy to lessen the health and socioeconomic damages caused by this pandemic. In addition, Italy applied non-pharmaceutical interventions based on physical distancing, school and store closures, workplace distancing, to avoid crowded places, similarly to measures applied to COVID-19 outbreak in Wuhan (cf., Prem et al., 2020). The benefits to support these measures until May 2020 are aimed at delaying and reducing the height of epidemic peak, affording health-care systems more time to expand and respond to this emergency and, as a result reducing the final impact of COVID-19 epidemic in society. In general, non-pharmaceutical

interventions are important factors to reduce the epidemic peak and the acute pressure on the health-care system (Prem et al., 2020; Fong et al., 2020). However, Brooks et al. (2019) report: “negative psychological effects of quarantine including post-traumatic stress symptoms, confusion, and anger. Stressors included longer quarantine duration, infection fears, frustration, boredom, inadequate supplies, inadequate information, financial loss, and stigma. Some researchers have suggested long-lasting effects. In situations where quarantine is deemed necessary, officials should quarantine individuals for no longer than required, provide clear rationale for quarantine and information about protocols, and ensure sufficient supplies are provided. Appeals to altruism by reminding the public about the benefits of quarantine to wider society can be favourable”.

This strategy, of course, does not prevent future epidemics similar to the COVID-19 and it does not protect regions from future Coronavirus disease threats on population. Nations have to apply *proactive strategies* that anticipate these potential problems and prevent them, for reducing the health and economic impact of future epidemics in society.

### 5.1. Suggested proactive strategies to prevent future epidemics similar to COVID-19

Daszak et al. (2020) argue that to prevent the next epidemics similar to COVID-19, research and investment of nations should focus on:

- 1) surveillance among wildlife to identify the high-risk pathogens they carry
- 2) surveillance among people who have contact with wildlife to identify early spillover events
- 3) improvement of market biosecurity regarding the wildlife trade.

In addition, the application of best practices of high surveillance and proper biosafety procedures in public and private institutes of virology that study viruses and new viruses to avoid that may be accidentally spread in surrounding environments with damages for population, vegetation and overall economy of nations. In this context, international collaboration among scientists is basic to address these risks and support decisions of policymakers to prevent future pandemic that creates huge socioeconomic issues worldwide (cf., Coccia and Wang, 2016).<sup>4</sup> In fact, following the COVID-19 outbreak, The Economist Intelligence Unit (EIU) points out that the global economy may contract of about by 2.5% and Italy by –7% of real GDP growth% in 2020 (EIU, 2020). Italy and other advanced countries should introduce organizational, product and process innovations to cope with future epidemics and environmental threats, such as the expansion of hospital capacity and testing capabilities, reduction of diagnostic and health system delays (also using devices with artificial intelligence, new Information and Communication Technologies for alleviating and/or eliminating effective interactions between infectious and susceptible individuals), and finally of course the development of effective vaccines and antivirals that can counteract future global public health threats in the presence of new epidemics similar to COVID-19 (Chen et al., 2020; Wilder-Smith et al., 2020; Riou and Althaus, 2020; Yao et al., 2020; cf., Coccia, 2015, 2017a,b,c, 2020; Coccia, 2020). New technology, for years to come, can cope with consequential epidemic outbreaks, also redefining the way governments interact with their citizens, such as the expanded use of surveillance tools, defending against cyberattacks and misinformation campaigns, etc. (cf., Coccia, 2016a,b, 2019). This study here shows that accelerated diffusion of COVID-19 is also likely associated with high air pollution and specific meteorological conditions (low wind speed, etc.) of North Italy and other Northern Italian regions that favor the transmission dynamics of viral infectivity. North Italy is one of the

<sup>4</sup> Socioeconomic shocks can lead to a general increase of prices, high public debts, high unemployment, income inequality and as a consequence violent behavior (Coccia, 2016, 2017a,b,c).

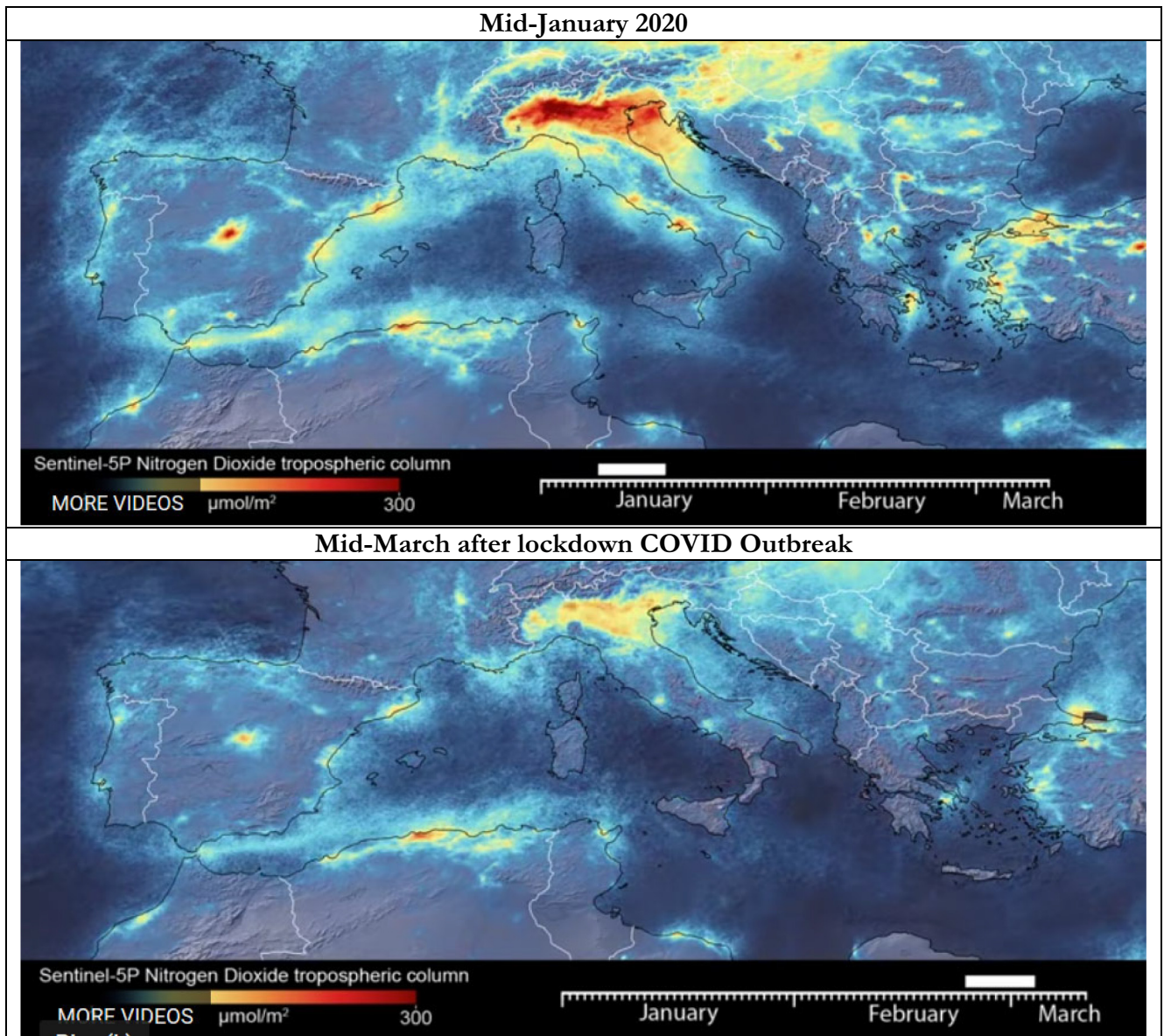
European regions with the highest motorization rate and polluting industrialization (cf., Legambiente, 2019). In 2018, the daily limits for PM<sub>10</sub> or ozone were exceeded in 55 provincial capitals (i.e., 35 days for PM<sub>10</sub> and 25 days for ozone). In 24 of the 55 Italian province capitals, the limit was exceeded for both parameters, with negative effects on population and subsequent health problems in the short and long run. In fact, Italian cities having a very high number of polluted days are mainly in North Italy: e.g., Brescia with 150 days (47 days for the PM<sub>10</sub> and 103 days for the ozone), Lodi with 149 days (78 days for the PM<sub>10</sub> and 71 days for the ozone), -these are two cities with severe COVID-19 outbreak-, Monza (140 days), Venice (139 days), Alessandria (136 days), Milan (135 days), Turin (134 days), Padua (130 days), Bergamo and Cremona (127 days), Rovigo (121 days) and Genoa (103 days). These provincial capitals of the River Po area in Italy have exceeded in 2018 at least one of the two limits just mentioned. The first city not located in the Po Valley is Frosinone (Lazio region in the central part of Italy) with 116 days of exceedance (83 days for the PM<sub>10</sub> and 33 days for the ozone), followed by Avellino, a city close to Naples in South Italy (with total 89 days: 46 days for PM<sub>10</sub> and 43 days for ozone) and Terni with 86 days (respectively 49 and 37 days for the two pollutants). Many cities in Italy are affected by air pollution and smog because of traffic, domestic heating, industries and agricultural practices and private cars that continue to be by far the most used means of transportation (more than 39 million cars in 2019).

A major source of emissions of nitrogen oxides into the atmosphere is the combustion of fossil fuels from stationary sources (heating, power generation, etc.) and motor vehicles. In Italy, the first COVID-19 outbreak has been found in Codogno, a small city close to Milan (Lombardy region in North Italy, see Fig. 3). Although local lockdown on February 25, 2020, the Regional Agency for Environmental Protection showed concentrations of PM<sub>10</sub> beyond the limits in almost all of Lombardy region. The day after, February 26, 2020, the high intensity of wind speed swept the entire Po Valley, bringing to Lombardy region a substantial reduction in the average daily concentrations of PM<sub>10</sub> (i.e., lower than 50 micrograms of particulate matter/m<sup>3</sup> of air). These observations associated with statistical analyses here suggest that high concentration of nitrogen dioxide of particulate air pollutants emitted by motor vehicles, power plants, and industrial facilities in North Italy seems to be a platform to support the diffusion of viral infectivity (cf., Groulx et al., 2018), increase hospitalizations for respiratory disorders (cf., Carugno et al., 2018; Nenna et al., 2017), increase asthma incidence (cf., Liao et al., 2011) and induce damages to the immune system of people (cf., Glencross et al., 2020). As a matter of fact, transmission dynamics of COVID-19 has found in air pollution and meteorological conditions of North Italy an appropriate environment and population for an accelerated diffusion that is generating more than 26,640 deaths and a huge number of hospitalizations in a short period of time (February–March–April 2020).

An indirect effect of quarantine and lockdown in Italy is the strong reduction of airborne Nitrogen Dioxide Plummets and PM<sub>10</sub> over Northern of Italy. The maps in Fig. 4 by ESA (2020) show concentrations of nitrogen dioxide NO<sub>2</sub> values across North Italy before the quarantine and lockdown in January 2020 and during the quarantine and lockdown in February–March 2020. The reduction in NO<sub>2</sub> pollution is apparent in all North Italy. Therefore, the non-pharmaceutical measures taken to cope with the COVID-19 outbreak (e.g., quarantine, closure of schools, the reduction of traffic, etc.), particularly restrictive in the first phase on regions of Northern Italy, have allowed a drastic reduction of concentrations of fine particulate matter, nitrogen dioxide and other polluting substances on the Po Valley (Fig. 4). For instance, in Piedmont, one of the regions of North Italy also having a high COVID-19 outbreak (24 820 infected individuals on 26 April 2020), the concentration of air pollution since the beginning of March 2020 has ever exceeded the limit values of PM<sub>10</sub> and has always remained below 50 µg/m<sup>3</sup> everywhere. Overall, then, the vital indirect effect of quarantine and lockdown in Italy and other European countries is a reduction in a short time of NO<sub>2</sub> and air pollution, improving the quality of environment that may reduce,

associated with quarantine, physical distancing and other inter-related factors, the transmission dynamics of COVID-19. A study by Q. Zhang et al. (2019) shows that with the implementation of air policy in China, from 2013 to 2017, fine particle (PM<sub>2.5</sub>) concentrations have significantly declined nationwide with health benefits. A possible threat in future is that after the quarantine and lockdown, the industrial activity of regions in North Italy has to resume at an intense pace of production and in next winter–fall season 2020–2021 there may be again high air pollution and meteorological conditions that can lead to other waves of viral infectivity of COVID-19 and/or other dangerous viruses at local and regional level. Of course, non-physical distancing and other long-run factors play a critical part in mitigating transmission dynamics of future epidemics similar to COVID-19, in particular when measures of physical distancing, school and store closures, workplace distancing, prohibition for crowded places are relaxed. The suggested strategy that North Italy and other industrialized regions has to apply, - (considering their geographical location, meteorological conditions and polluting industrialization), - is to avoid to overcome the limits set of PM<sub>10</sub> and other pollutants, following more and more sustainable pathways of growth. *One of the findings here suggests that the max number of days per year that Italian provincial capitals can exceed the limits set for PM<sub>10</sub> (particulate matter 10 µm or less in diameter) or for ozone, considering the meteorological condition has to be less than 50 days. Beyond this critical point, the study suggests that environmental inconsistencies because of the combination between air pollution and meteorological conditions trigger a take-off of viral infectivity (epidemic diffusion) with damages for health of population and, as result for economy and society.* Italy must design and set up necessary measures to drastically reduce the concentrations of pollution and improve air quality in cities. Italy has to respect Legislative Decree 155/2010 that establishes a maximum number of 35 days/year with concentrations higher than 50 µg/m<sup>3</sup> in cities (cf., Law n. 155 of the year 2000). As a matter of fact, the quarantine and other non-pharmaceutical interventions can reduce the impact of viral infectivity in the short term, but to prevent future epidemics similar to COVID-19, Italy and advanced nations have more and more to sustain a sustainable growth. The environmental policy to cope with future consequential coronavirus threats has to be also based on sustainable technologies that reduce air pollution improving the quality of air and environment for population (cf., Coccia, 2005, 2006, 2018; Coccia and Watts, 2020). Italy must support, more and more, sustainable mobility as engine of socioeconomic change and redesign cities for people using an urban planning that improves public respiratory health. Moreover, in the presence of the association between air pollution, climate<sup>5</sup> and high diffusion of viral infectivity, Italy and other advanced nations have to reduce the motorization rate of polluting machines with a transition to new electric vehicles, generating a revolution in society. It is basic to encourage sustainable mobility, by enhancing local, urban and commuter public transport with electric vehicles and creating vast Low Emission Zones within cities. Italy and Europe have to launch a real sustainable growth roadmap with the aim of complete zero emissions in all inter-related socioeconomic systems. Some studies done in the past show the causality of the reduction of air pollution on health benefits. For instance, Pope (1989) describes the case of a labor dispute that shut down a large steel mill in the Utah Valley for 14 months in 1987. Toxicological studies of particulate matter collected before, during, and after the strike, in the Utah Valley case, provide strong evidence of a causal relation between exposure to ambient particulate matter, mortality and morbidity. Ambient particulate matter concentrations as well as respiratory hospital admissions were clearly decreased during the strike, increasing to prestrike levels after the dispute ended (Pope, 1989; cf., the reduction of mortality described by Pope, 1996). Another example is the

<sup>5</sup> Some studies show that in addition to human-to-human contact, ambient temperature is an important factor in the transmission and survival of coronaviruses (Zhu et al., 2020) as well as temperature variation and humidity may also be important factors affecting the COVID-19 mortality (Ma et al., 2020).



Sources: European Space Agency, 2020.

**Fig. 4.** Reduction Nitrogen Dioxide before (January 2020) and during lockdown (February–March 2020) because of COVID-19 Outbreak in Italy. Sources: European Space Agency (2020).

reductions in acute-care visits and hospital admissions for asthma in Atlanta (GA, USA) in conjunction with low air pollution due to traffic restrictions taken during the 2000 Olympic games (Friedman et al., 2001).

#### 6. Conclusive observations: lessons that have to be learned and limitations of this study

The intensity of human interactions with Earth system has accelerated in recent decades, because of urban development, population growth, industrialization, deforestation, etc., with changes in physical, biological, and chemical processes in soils and waters. In particular, human activity, driven by a high level of world population that is about eight billion (U. S. Census Bureau, 2020), has induced changes to Earth's surface, cryosphere, ecosystems, and climate that are now so great and rapid, advancing the geological epoch of Anthropocene (Crutzen and Stoermer, 2000; Foley et al., 2013). The beginning of the Anthropocene at around 1780 CE marks the huge growth of human population and carbon emissions as well as atmospheric  $\text{CO}_2$  levels

(Ellis et al., 2013). The scale of carbon emissions, because of polluting industrialization, is leading to a rise in atmospheric greenhouse gases at an unparalleled rate associated with gradual rise in carbon dioxide (Glikson, 2013). In this era of Anthropocene, the health effects of air pollution have been subject to intense study in recent years. Exposure to airborne particulate matter and ozone is associated with increases in mortality, hospital admissions for respiratory and cardiovascular diseases and other health disorders (Kampa and Castanas, 2008; Hoek et al., 2013). The idea that high levels of air pollution have a detrimental effect on human health is now rarely contested, and acute exposures to high concentrations of air pollutants exacerbate cardiopulmonary disorders in human population (Langrish and Mills, 2014).

This study shows that factors determining the diffusion of epidemics similar to COVID-19 are due to manifold elements, given by:

1. *General factors* that are the same for all locations and associated with biological characteristics of viruses, such as incubation time, effects on infected and susceptible people, etc.

2. *Specific factors* that are different for each location and even for each individual, such as level of air pollution over time and space, meteorological conditions of specific location (e.g., temperature and wind speed), population density of areas, economic wealth, cultural characteristics (religious habits, food culture, etc.), organization and efficiency of healthcare sector, facilities and equipment in health sector, immune system of people, average age of population, sex of people, race, socioeconomic status, occupational factors, etc.

The main results of the study here, based on case study of COVID-19 outbreak in Italy, can explain and generalize the factors determining transmission dynamics of Coronavirus disease in regions with polluting industrialization. In particular,

- The acceleration of transmission dynamics of COVID-19 has a high association with air pollution of cities measured with days exceeding the limits set for PM<sub>10</sub> or ozone.
- *Cities having more than 100 days of air pollution (exceeding the limits set for PM<sub>10</sub> or ozone), they have a very high average number of infected individuals* (about 3600 infected individuals on 7th April 2020), whereas cities having less than 100 days of air pollution, they have a lower average number of infected individuals (about 1000 infected individuals).
- *Hinterland cities*, with high number of average days exceeding the limits set for PM<sub>10</sub>, have a very high number of infected people on 7th April 2020 (arithmetic mean is about 2200 infected individuals, with average polluted days more than 80 days per year). *Coastal cities*, also having days exceeding the limits set for PM<sub>10</sub> or ozone, have an arithmetic mean of about 940 infected individuals, with average polluted days about 60 per year. In addition, *coastal cities* have an average higher intensity of wind speed (about 12 km/h) than hinterland cities (8 km/h) and statistical analysis reveals a negative coefficient of correlation between number of infected individuals and of wind speed ( $r > -31\%$ ,  $p$ -value  $< 0.05$ ): in fact, wind speed and other climate factors can clean air from pollutants that are associated with transmission dynamics of Coronavirus disease.
- Air pollution in Italian cities under study seems to be a more important predictor in the initial phase of transmission dynamics (on 17th March 2020,  $b_1 = 1.27$ ,  $p < 0.001$ ) than human-to-human transmission ( $b_2 = 0.31$ ,  $p < 0.05$ ). Subsequently, the factor of air pollution reduces intensity of the diffusion of Coronavirus infection (on 7th April 2020  $b'_1 = 0.81$ ,  $p < 0.001$ ) also because of indirect effect of lockdown, whereas coefficient of human-to-human transmission does not change ( $b'_2 = 0.31$ ,  $p < 0.01$ ). *This result reveals that accelerated transmission dynamics of COVID-19 is due to the mechanism of air pollution-to-human transmission in addition to human-to-human transmission.*
- To minimize future epidemics similar to COVID-19, the max number of days per year that Italian provincial capitals and other cities with polluting industrialization can exceed the limits set for PM<sub>10</sub> (particulate matter 10 μm or less in diameter) or for ozone, considering their meteorological conditions, has to be less than 50 days.

Hence, high concentration of nitrogen dioxide and particulate air pollutants emitted by motor vehicles, power plants, and industrial facilities in North Italy seems to be a platform to support the diffusion of viral infectivity (Groulx et al., 2018), increase hospitalizations for respiratory virus bronchiolitis (cf., Carugno et al., 2018; Nenna et al., 2017), increase asthma incidence and other respiratory disorders (Liao et al., 2011) and induce damages to the immune system of people (Glencross et al., 2020). Beelen et al. (2013) report the need to draw attention to the continuing effects of air pollution on health of people. A socioeconomic strategy to prevent future epidemics similar to the COVID-19 is also the reduction of pollution with fruitful environmental and health effect by rationalizing of manufacturing industry in a perspective of sustainable development and by de-industrializing polluting

activities in the geographical development of capitalism. De-industrialization of polluting industries and sustainable development impose often huge social costs in the short term for people, households, and families but they have long-run benefits for human societies. Studies show that public and environmental health policy interventions have the potential to reduce morbidity and mortality in Europe (cf., Raaschou-Nielsen et al., 2013). In fact, the improvements of air quality have been accompanied by demonstrable benefits to human health. Pope et al. (2009) report that PM<sub>2.5</sub> concentrations fell by a third from the early 1980s to the late 1990s across major US metropolitan areas, with each 10 μg/m<sup>3</sup> reduction associated with an increase in life expectancy of 0.61 years. Because of health problems of polluting industrialization, Wei et al. (2020) suggest different air pollution regulations in regions having varied geographical and climatic conditions, and different bio aerosol pollution. In particular, Wei et al. (2020) suggest that different air quality strategies should be applied in inland and coastal cities, e.g., coastal cities need start bioaerosol risk alarm during moderate pollution when severe pollution occurs in inland cities. Guo et al. (2019) argue that haze pollution is a serious environmental problem affecting cities, proposing a sustainable urban planning directed to improve public respiratory health. In brief, the long-term benefits of sustainable economic development are basic for the improvement of environment, atmosphere, air quality and especially health of population as well as for the reduction of possible factors determining accelerated diffusion of viral infectivity and Coronavirus diseases in winter and fall seasons (Blackaby, 1978; Bluestone and Harrison, 1982; Pike, 2009).

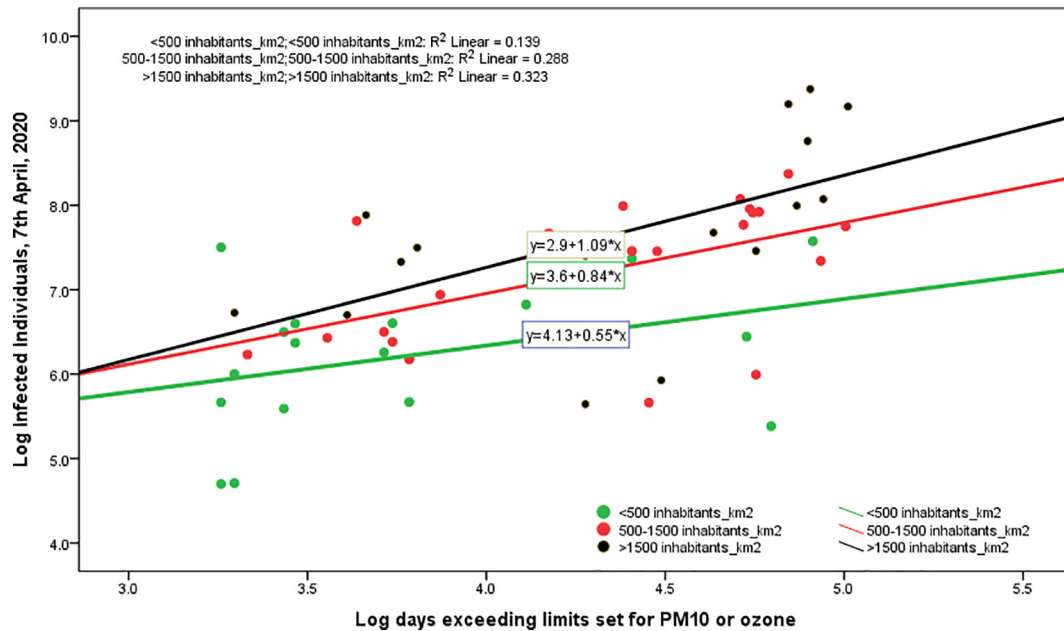
These findings here are consistent with correlational studies that health effects of air pollution exposure can extend beyond cardiopulmonary systems, affecting diffusion of epidemics similar to COVID-19. Hence, it is important to reinforce empirical evidence related to association between air pollution and inter-related factors of the transmission dynamics of viruses similar to COVID-19, to help policy makers to develop proactive strategies for the control of environment, reduction of air pollution and polluting industrialization, and to prevent the diffusion of future Coronavirus diseases. The complex problem of epidemic threats has to be treated with a proactive approach of *dissolution*: it means to redesign the strategies and protocols to cope with future epidemics in such way as to eliminate the conditions that caused accelerated diffusion of COVID-19, thus enabling nations to do better in the future than the best it can do today (Ackoff and Rovin, 2003, pp. 9–10; Bundy et al., 2017). This study reveals interesting results of transmission dynamics of COVID-19 outbreak given by *two mechanisms* that may have accelerated the diffusion of viral infectivity in Italy: air pollution-to-human transmission and human-to-human transmission that create dangerous interaction over time and space. However, these conclusions are tentative. There are several challenges to such study, particularly in real time. Sources may be incomplete, or only capture certain aspects of the on-going outbreak dynamics; there is need for much more research in to the complex relations between diffusion of Coronavirus diseases, levels of air pollution, meteorological factors, immune systems of population and other determinants within and between countries. Overall, then, in the presence of polluting industrialization of cities and mechanisms of diffusion of viral infectivity also based on air pollution -to-human transmission (*airborne viral infectivity diseases*), this study must conclude that a comprehensive strategy to prevent future epidemics similar to COVID-19 has also to be designed in environmental and socioeconomic terms, that is in terms of sustainability science and environmental science, and *not only* in terms of biology, medicine, healthcare and health sector.

#### Declaration of competing interest

The author declares that he is the sole author of this manuscript and he has no known competing financial interests or personal relationships that could have appeared to influence the work reported in this paper. This study has none funders.



## Appendix A



**Fig. 1A.** Regression line of Log Infected 7th April, 2020 on Log days exceeding limits set for PM<sub>10</sub> or ozone according to density of population per km<sup>2</sup> in Italian province capitals,  $N = 55$  (3 categories: <math><500</math>, 500–1500, >1500 inhabitants per km<sup>2</sup>). Note: This result confirms that transmission dynamics of COVID-19 increases with the mechanism of air pollution-to-human transmission, but the rate of growth of Coronavirus disease is higher in the presence of a high density of population (i.e., >1500 inhabitants per km<sup>2</sup>) because of the mechanisms of human-to-human transmission.

## References

- Ackoff, R.L., Rovin, S., 2003. *Redesigning Society*. Stanford University Press, Stanford, CA.
- Backer, J.A., Klinkenberg, D., Wallinga, J., 2020. Incubation period of 2019 novel coronavirus (2019-nCoV) infections among travellers from Wuhan, China, 20–28 January 2020. *Euro Surveill* 25, 2000062 2020.
- Barger-Lux, M.J., Heaney, R.P., 2002. Effects of above average summer sun exposure on serum 25-hydroxyvitamin D and calcium absorption. *J. Clin. Endocrinol. Metab.* 87 (11), 4952–4956.
- Bayram, H., Sapsford, R.J., Abdelaziz, M.M., Khair, O.A., 2001. Effect of ozone and nitrogen dioxide on the release of proinflammatory mediators from bronchial epithelial cells of nonatopic nonasthmatic subjects and atopic asthmatic patients in vitro. *J. Allergy Clin. Immunol.* 107, 287–294.
- Beelen, R., Raaschou-Nielsen, O., Stafoggia, M., et al., 2013. Effects of long-term exposure to air pollution on natural-cause mortality: an analysis of 22 European cohorts within the multicentre ESCAPE project. *Lancet* [https://doi.org/10.1016/S0140-6736\(13\)62158-3](https://doi.org/10.1016/S0140-6736(13)62158-3) published online Dec 9.
- Bell, M.L., Davis, D.L., Fletcher, T., 2004. A retrospective assessment of mortality from the London Smog episode of 1952: the role of influenza and pollution. *Environ. Health Perspect.* 112 (1), 6.
- Blackaby, F., 1978. *De-industrialisation*. Heinemann, London.
- Bloemsmas, L.D., Hoek, G., Smit, L.A., 2016. Panel studies of air pollution in patients with COPD: systematic review and meta-analysis. *Environ. Res.* 151, 458–468.
- Bluestone, B., Harrison, B., 1982. *The Deindustrialization of America: Plant Closings, Community Abandonment and the Dismantling of Basic Industry*. Basic Books, New York.
- Brooks, S.K., Webster, R.K., Smith, L.E., Woodland, L., Wessely, S., Greenberg, N., Rubin, G.J., 2019. The psychological impact of quarantine and how to reduce it: rapid review of the evidence. *The Lancet*, Rapid Review [https://doi.org/10.1016/S0140-6736\(20\)30460-8](https://doi.org/10.1016/S0140-6736(20)30460-8) Published Online February 26, 2020.
- Brunekeerf, B., Holgate, S.T., 2002a. Air pollution and health. *Lancet* 360, 1233–1242 2002.
- Brunekeerf, B., Holgate, S.T., 2002b. Air pollution and health. *Lancet* 360 (9341), 1233–1242. [https://doi.org/10.1016/S0140-6736\(02\)11274-8](https://doi.org/10.1016/S0140-6736(02)11274-8).
- Bundy, J., Pfarrer, M.D., Short, C.E., Coombs, W.T., 2017. Crises and crisis management: integration, interpretation, and research development. *J. Manag.* 43 (6), 1661–1692. <https://doi.org/10.1177/0149206316680030>.
- Camacho, A., Kucharski, A., Aki-Sawyer, Y., et al., 2015. Temporal changes in Ebola transmission in Sierra Leone and implications for control requirements: a real-time modelling study. *PLoS Curr* 2015, 7.
- Carugno, M., Dentali, F., Mathieu, G., Fontanella, A., Mariani, J., Bordini, L., Milani, G.P., Consonni, D., Bonzini, M., Bollati, V., Pesatori, A.C., 2018. PM<sub>10</sub> exposure is associated with increased hospitalizations for respiratory syncytial virus bronchiolitis among infants in Lombardy, Italy. *Environ. Res.* 166 (2018), 452–457. <https://doi.org/10.1016/j.envres.2018.06.016>.
- Centers for Disease Control and Prevention, 2020. Quarantine and isolation. 2017. <https://www.cdc.gov/quarantine/index.html>, Accessed date: 30 January 2020.
- Chan, J.F.W., Yuan, S., Kok, K.H., et al., 2020. A familial cluster of pneumonia associated with the 2019 novel coronavirus indicating person-to-person transmission: a study of a family cluster. *Lancet* 395, 514–523 2020.
- Chang, K.H., Hsu, C.C., Muo, C.H., Hsu, C.Y., Liu, H.C., Kao, C.H., Chen, C.Y., Chang, M.Y., Hsu, Y.C., 2016. Air pollution exposure increases the risk of rheumatoid arthritis: a longitudinal and nationwide study. *Environ. Int.* 94, 495–499.
- Charmi, H., Sneha, G., Ujwalkumar, T., 2018. A review on recent progress in observations, and health effects of bio aerosols. *Environ. Int.* 118, 189e193.
- Chen, S., Yang, J., Yang, W., Wang, C., Barnighausen, T., 2020. COVID-19 control in China during mass population movements at New Year. *Lancet* 395, 764–766.
- Churchman, C.W., 1971. *The Design of Inquiring Systems*. Basic Books, New York.
- Coccia, M., 2005. Metrics to measure the technology transfer absorption: analysis of the relationship between institutes and adopters in northern Italy. *International Journal of Technology Transfer and Commercialization* 4 (4), 462–486. <https://doi.org/10.1504/IJTTC.2005.006699>.
- Coccia, M., 2006. Analysis and classification of public research institutes. *World Review of Science, Technology and Sustainable Development* 3 (1), 1–16. <https://doi.org/10.1504/WRSTSD.2006.008759>.
- Coccia, M., 2012. Driving forces of technological change in medicine: radical innovations induced by side effects and their impact on society and healthcare. *Technol. Soc.* 34 (4), 271–283. <https://doi.org/10.1016/j.techsoc.2012.06.002>.
- Coccia, M., 2014. Path-breaking target therapies for lung cancer and a far-sighted health policy to support clinical and cost effectiveness. *Health Policy and Technology* 3 (1), 74–82. <https://doi.org/10.1016/j.hlpt.2013.09.007>.
- Coccia, M., 2015. General sources of general purpose technologies in complex societies: theory of global leadership-driven innovation, warfare and human development. *Technol. Soc.* 42 (August), 199–226. <https://doi.org/10.1016/j.techsoc.2015.05.008>.
- Coccia, M., 2016. The relation between price setting in markets and asymmetries of systems of measurement of goods. *The Journal of Economic Asymmetries* 14 (part B, November), 168–178. <https://doi.org/10.1016/j.jeca.2016.06.001>.
- Coccia, M., 2016a. Radical innovations as drivers of breakthroughs: characteristics and properties of the management of technology leading to superior organizational performance in the discovery process of R&D labs. *Tech. Anal. Strat. Manag.* 28 (4), 381–395. <https://doi.org/10.1080/09537325.2015.1095287>.
- Coccia, M., 2016b. Problem-driven innovations in drug discovery: co-evolution of the patterns of radical innovation with the evolution of problems. *Health Policy and Technology* 5 (2), 143–155. <https://doi.org/10.1016/j.hlpt.2016.02.003>.
- Coccia, M., 2017a. A theory of general causes of violent crime: homicides. Income inequality and deficiencies of the heat hypothesis and of the model of CLASH. *Aggress. Violent Behav.* 37 (November–December), 190–200. <https://doi.org/10.1016/j.avb.2017.10.005> (doi:10.1016/j.jengtecman.2019.11.003).
- Coccia, M., 2017b. Sources of technological innovation: radical and incremental innovation problem-driven to support competitive advantage of firms. *Tech. Anal. Strat. Manag.* 29 (9), 1048–1061. <https://doi.org/10.1080/09537325.2016.1268682>.

- Coccia, M., 2017c. Asymmetric paths of public debts and of general government deficits across countries within and outside the European monetary unification and economic policy of debt dissolution. *The Journal of Economic Asymmetries* 15 (June), 17–31. <https://doi.org/10.1016/j.techfore.2010.02.003>.
- Coccia, M., 2018. Theorem of not independence of any technological innovation. *Journal of Economics Bibliography* 5 (1), 29–35. <https://doi.org/10.1453/jeb.v5i1.1578>.
- Coccia, M., 2019. Why do nations produce science advances and new technology? *Technol. Soc.* 59 (November), 1–9. <https://doi.org/10.1016/j.techsoc.2019.03.007>
- Coccia, M., 2020. Deep learning technology for improving cancer care in society: new directions in cancer imaging driven by artificial intelligence. *Technol. Soc.* 60 (February), 1–11. <https://doi.org/10.1016/j.techsoc.2019.101198>.
- Coccia, M., 2020. The evolution of scientific disciplines in applied sciences: dynamics and empirical properties of experimental physics. *Scientometrics*, 138474 <https://doi.org/10.1007/s11192-020-03464-y> In press.
- Coccia, M., Wang, L., 2015. Path-breaking directions of nanotechnology-based chemotherapy and molecular cancer therapy. *Technological Forecasting & Social Change* 94 (May), 155–169. <https://doi.org/10.1016/j.techfore.2014.09.007>.
- Coccia, M., Wang, L., 2016. Evolution and convergence of the patterns of international scientific collaboration. *Proc. Natl. Acad. Sci. U. S. A.* 113 (8), 2057–2061. [www.pnas.org/cgi/doi/10.1073/pnas.1510820113](http://www.pnas.org/cgi/doi/10.1073/pnas.1510820113).
- Coccia, M., Watts, J., 2020. A theory of the evolution of technology: technological parasitism and the implications for innovation management. *J. Eng. Technol. Manag.* 55 (2020), 101552 S0923-4748(18)30421-1. <https://doi.org/10.1016/j.jengtecman.2019.11.003>.
- Cooper, G.S., Stroehla, B.C., 2003. The epidemiology of autoimmune diseases. *Autoimmun. Rev.* 2 (3), 119–125.
- Cooper, B.S., Pitman, R.J., Edmunds, W.J., Gay, N.J., 2006. Delaying the international spread of pandemic influenza. *PLoS Med.* 3, e212 2006.
- Crutzen, P.J., Stoermer, E.F., 2000. The “Anthropocene”. *IGBP Newsletter* 41 (1), 17–18.
- Darrow, L.A., Mitchell, K., Flanders, W.D., Mulholland, J.A., Tolbert, P.E., Strickland, M.J., 2014. Air pollution and acute respiratory infections among children 0–4 years of age: an 18-year time-series study. *Am. J. Epidemiol.* 180, 968–977. <https://doi.org/10.1093/aje/kwu234>.
- Das, P., Horton, R., 2017. Pollution, health, and the planet: time for decisive action. *Lancet* 391, 407–408.
- Daszak, P., Olival, K.J., Li, H., 2020. A strategy to prevent future epidemics similar to the 2019-nCoV outbreak. *Biosafety and Health* <https://doi.org/10.1016/j.bsheal.2020.01.003>.
- De Roos, A.J., Koehoorn, M., Tamburic, L., Davies, H.W., Brauer, M., 2014. Proximity to traffic, ambient air pollution, and community noise in relation to incident rheumatoid arthritis. *Environ. Health Perspect.* 122 (10), 1075.
- De Serres, G., Lampron, N., La Forge, J., Rouleau, I., Bourbeau, J., Weiss, K., et al., 2009. Importance of viral and bacterial infections in chronic obstructive pulmonary disease exacerbations. *J. Clin. Virol.* 46, 129–133.
- Deal, E.C., McFadden, E.R., Ingram, R.H., Breslin, F.J., Jaeger, J.J., 1980. Airway responsiveness to cold air and hyperpnea in normal subjects and in those with hay fever and asthma. *Am J Respir Dis* 121, 621–628.
- Després, V., Huffman, J.A., Burrows, S.M., Hoese, C., Safatov, A., Buryak, G., et al., 2012. Primary biological aerosol particles in the atmosphere: a review. *Tellus B* 64, 145–153.
- Dong, E., Du, H., Gardner, L., 2020. An Interactive Web-based Dashboard to Track COVID-19 in Real Time. [https://doi.org/10.1016/S1473-3099\(20\)30120-1](https://doi.org/10.1016/S1473-3099(20)30120-1).
- Dowell, S.F., Whitney, C.G., Wright, C., Rose, C.E., Schuchat, A., 2003. Seasonal patterns of invasive pneumococcal disease. *Emerging Infect Dis* 9, 573e9 2003.
- EIU, 2020. COVID-19 to Send Almost all G20 Countries Into a Recession, 26th Mar 2020.
- EIU, 2020a. Q2 Global Forecast 2020. The Economist Intelligence Unit, London.
- Ellis, E.C., Kaplan, J.O., Fuller, D.Q., Vavrus, S., Goldewijk, K.K., Verburg, P.H., 2013. Used planet: a global history. *Proc. Natl. Acad. Sci.* <https://doi.org/10.1073/pnas.1217241110>.
- ESA, 2020. European Space Agency Coronavirus: nitrogen dioxide emissions drop over Italy. [www.esa.int](http://www.esa.int), Mar 13, 2020. [https://www.esa.int/ESA\\_Multimedia/Videos/2020/03/Coronavirus\\_nitrogen\\_dioxide\\_emissions\\_drop\\_over\\_Italy](https://www.esa.int/ESA_Multimedia/Videos/2020/03/Coronavirus_nitrogen_dioxide_emissions_drop_over_Italy), Accessed date: March 2020.
- European Centre for Disease Prevention and Control, 2020. Public Health Management of Persons Having Had Contact With Novel Coronavirus Cases in the European Union. 2020. European Centre for Disease Prevention and Control. <https://www.ecdc.europa.eu/en/publications-data/public-health-management-personshaving-had-contact-novel-coronavirus-cases>, Accessed date: 2 February 2020.
- European Centre for Disease Prevention and Control, 2020a. Risk assessment guidelines for diseases transmitted on aircraft. Part 2: operational guidelines for assisting in the evaluation of risk for transmission by disease. 2011. [https://www.ecdc.europa.eu/sites/default/files/media/en/publications/Publications/1012\\_GUI\\_RAGIDA\\_2.pdf](https://www.ecdc.europa.eu/sites/default/files/media/en/publications/Publications/1012_GUI_RAGIDA_2.pdf), Accessed date: 6 February 2020.
- Farhat, S.C., Silva, C.A., Orione, M.A., Campos, L.M., Sallum, A.M., Braga, A.L., 2011. Air pollution in autoimmune rheumatic diseases: a review. *Autoimmun. Rev.* 11 (1), 14–21.
- Flint, R., 1884. *Vico*. William Blackwood and Sons, Edinburgh and London.
- Foley, S.F., Gronenborn, D., Andraea, M.O., Kadereit, J.W., Esper, J., Scholz, D., Pöschl, U., Jacob, D.E., Schöne, B.R., Schreg, R., Vött, A., Jordan, D., Lelieveld, J., Weller, C.G., Alt, K.W., Gaudzinski-Windheuser, S., Bruhn, K.C., Tost, H., Sirocco, F., Crutzen, P.J., 2013. The Palaeoanthropocene: the beginnings of anthropogenic environmental change. *Anthropocene* 3, 83–88.
- Fong, M.W., Gao, H., Wong, J.Y., et al., 2020. Nonpharmaceutical measures for pandemic influenza in nonhealthcare settings—social distancing measures. *Emerg. Infect. Dis.* 2020. <https://doi.org/10.3201/eid2605.190995> published online Feb 6.
- Fraser, C., Riley, S., Anderson, R.M., Ferguson, N.M., 2004. Factors that make an infectious disease outbreak controllable. *Proc. Natl. Acad. Sci. U. S. A.* 101, 6146–6151.
- Friedman, M.S., Powell, K.E., Hutwagner, L., Graham, L.M., Teague, W.G., 2001. Impact of changes in transportation and commuting behaviors during the 1996 Summer Olympic games in Atlanta on air quality and childhood asthma. *JAMA* 285, 897–905.
- Fröhlich-Nowoisky, J., Kampf, C.J., Weber, B., Huffman, J.A., Pöschl, U., 2016. Bioaerosols in the Earth system: climate, health, and ecosystem interactions. *Atmos. Res.* 182, 346–376.
- Funk, S., Ciglenecki, I., Tiffany, A., et al., 2017. The impact of control strategies and behavioural changes on the elimination of Ebola from Lofa County, Liberia. *Philos. Trans. R. Soc. Lond. Ser. B Biol. Sci.* 372, 20160302.
- Gao, J.F., Fan, X.Y., Li, H.Y., Pan, K.L., 2017. Airborne bacterial communities of PM<sub>2.5</sub> in Beijing-Tianjin-Hebei megalopolis, China as revealed by Illumina MiSeq sequencing: a case study. *Aerosol Air Qual. Res.* 17.
- Ghio, A.J., Carraway, M.S., Madden, M.C., 2012. Composition of air pollution particles and oxidative stress in cells, tissues, and living systems. *J. Toxicol. Environ. Health B Crit. Rev.* 15 (1), 1–21 (2012).
- Glasser, J.W., Hupert, N., McCauley, M.M., Hatchett, R., 2011. Modeling and public health emergency responses: lessons from SARS. *Epidemics* 3, 32–37 2011.
- Glencross, Drew A., Ho, Tzer-Ren, Camina, Nuria, Hawrylowicz, Catherine M., Pfeffer, P.E., 2020. Air pollution and its effects on the immune system. *Free Radical Biology and Medicine*. <https://doi.org/10.1016/j.freeradbiomed.2020.01.179> in press.
- Glikson, A., 2013. Fire and human evolution: the deep-time blueprints of the Anthropocene. *Anthropocene* 3, 89–92.
- Gorse, G.J., O'Connor, T.Z., Young, S.L., Habib, M.P., Wittes, J., Neuzil, K.M., et al., 2006. Impact of a winter respiratory virus season on patients with COPD and association with influenza vaccination. *Chest* 130, 1109–1116 2006.
- Grant, W.B., 2002. An ecologic study of dietary and solar Ultraviolet-B links to breast carcinoma mortality rates. *Cancer* 94 (1), 272–281.
- Groulx, N., Urch, B., Duchaine, C., Mubareka, S., Scott, J.A., 2018. The Pollution Particulate Concentrator (PoPCon): a platform to investigate the effects of particulate air pollutants on viral infectivity. *Sci. Total Environ.* 628–629 (2018), 1101–1107. <https://doi.org/10.1016/j.scitotenv.2018.02.118>.
- Guo, L., Luo, Jia, Yuan, Man, Huang, Yaping, Shen, Huanfeng, Li, Tongwen, 2019. The influence of urban planning factors on PM<sub>2.5</sub> pollution exposure and implications: a case study in China based on remote sensing, LBS, and GIS data. *Sci. Total Environ.* 659, 1585–1596. <https://doi.org/10.1016/j.scitotenv.2018.12.448>.
- Hao, J., Yang, Zhiyi, Huang, Shuqiong, Yang, Wenwen, Zhud, Zhongmin, Tian, Liqiao, Luf, Yuanan, Xiang, Hao, Liu, Suyang, 2019. The association between short-term exposure to ambient air pollution and the incidence of mumps in Wuhan, China: a time-series study. *Environ. Res.* 177, 108660. <https://doi.org/10.1016/j.envres.2019.108660>.
- Hellewell, J., Abbott, S., Gimma, A., Bosse, N.I., Jarvis, C.I., Russell, T.W., Munday, J.D., Kucharski, A.J., Edmunds, W.J., Centre for the Mathematical Modelling of Infectious Diseases COVID-19 Working Group, Funk, Sebastian, Eggo, R.M., 2020. Feasibility of controlling COVID-19 outbreaks by isolation of cases and contacts. *Lancet Glob. Health* [https://doi.org/10.1016/S2214-109X\(20\)30074-7](https://doi.org/10.1016/S2214-109X(20)30074-7) 2020.
- Hoang, T.T.T., Nguyen, V.N., Dinh, N.S., et al., 2019. Active contact tracing beyond the household in multidrug resistant tuberculosis in Vietnam: a cohort study. *BMC Public Health* 19, 241 2019.
- Hoek, G., Krishnan, R.M., Beelen, R., Peters, A., Ostro, B., Brunekreef, B., Kaufman, J.D., 2013 Dec. Long-term air pollution exposure and cardiorespiratory mortality: a review. *Environ. Health* 12 (1), 43.
- il Meteo, 2020. *Medie e totali mensili*. <https://www.ilmeteo.it/portale/medie-climatiche>, Accessed date: March 2020.
- Istituto Superiore Sanità, 2020. Nuovo coronavirus SARS-CoV-2. Caratteristiche dei pazienti deceduti positivi a COVID-19 in Italia. <https://www.epicentro.iss.it/coronavirus/sars-cov-2-decessi-italia>, Accessed date: 1 April 2020.
- Jalaludin, B.B., O'Toole, B.I., Leeder, S.R., 2004. Acute effects of urban ambient air pollution on respiratory symptoms, asthma medication use, and doctor visits for asthma in a cohort of Australian children. *Environ. Res.* 95, 32–42. [https://doi.org/10.1016/S0013-9351\(03\)00038-0](https://doi.org/10.1016/S0013-9351(03)00038-0).
- Jansen, A.G.S.C., Sanders, E.A.M., Van Der Ende, A., Van Loon, A.M., Hoes, A.W., Hak, E., 2008. Invasive pneumococcal and meningococcal disease: association with influenza virus and respiratory syncytial virus activity? *Epidemiol. Infect.* 136, 1448e54.
- Jaspers, I., Cieniewicz, J.M., Zhang, W.L., Brighton, L.E., Carson, J.L., Beck, M.A., et al., 2005. Diesel exhaust enhances influenza virus infections in respiratory epithelial cells. *Toxicol. Sci.* 85, 990–1002.
- Jin, L., Luo, X., Fu, P., Li, X., 2017. Airborne particulate matter pollution in urban China: a chemical mixture perspective from sources to impacts. *Natl. Sci. Rev.* 593–610.
- Johns Hopkins Center for System Science and Engineering, 2020. Coronavirus COVID-19 Global Cases. <https://gisanddata.maps.arcgis.com/apps/opsdashboard/index.html#/bda7594740fd40299423467b48e9ecf6> accessed in April 2020.
- Jones, A.M., Harrison, R.M., 2004. The effects of meteorological factors on atmospheric bio aerosol concentrations—a review. *Sci. Total Environ.* 326, 151e180.
- Jung, C.R., Hsieh, H.Y., Hwang, B.F., 2017. Air pollution as a potential determinant of rheumatoid arthritis: a population-based cohort study in Taiwan. *Epidemiology* 28, S54–S59.
- Kampa, M., Castanas, E., 2008. Human health effects of air pollution. *Environ. Pollut.* 151 (2), 362–367.
- Kang, M., Song, T., Zhong, H., et al., 2016. Contact tracing for imported case of Middle East respiratory syndrome, China, 2015. *Emerging Infect Dis* 22 (9) 2016.
- Kim, P.E., Musher, D.M., Glezen, W.P., Rodriguez-Barradas, M.C., Nahm, W.K., Wright, C.E., 1996. Association of invasive pneumococcal disease with season, atmospheric conditions, air pollution, and the isolation of respiratory viruses. *Clin. Infect. Dis.* 22, 1006e1996.
- Ko, F.W.S., Chan, P.K.S., Chan, M.C.H., To, K.W., Ng, S.S.S., Chau, S.S.L., et al., 2007. Viral etiology of acute exacerbations of COPD in Hong Kong. *Chest* 132, 900–908.

- Ko, F.W.S., Tam, W., Wong, T.W., Chan, D.P.S., Tung, A.H., Lai, C.K.W., et al., 2007a. Temporal relationship between air pollutants and hospital admissions for chronic obstructive pulmonary disease in Hong Kong. *Thorax* 62, 779e84 2007.
- Kucharski, A.J., Camacho, A., Checchi, F., et al., 2015. Evaluation of the benefits and risks of introducing Ebola community care centers, Sierra Leone. *Emerg. Infect. Dis.* 21, 393–399 2015.
- Kucharski, Adam J., Russell, Timothy W., Diamond, Charlie, Liu, Yang, Edmunds, John, Funk, Sebastian, Eggo, Rosalind M., on behalf of the Centre for Mathematical Modelling of Infectious Diseases COVID-19 working group, 2020. Early dynamics of transmission and control of COVID-19: a mathematical modelling study. *Lancet Infect. Dis.* [https://doi.org/10.1016/S1473-3099\(20\)30144-4](https://doi.org/10.1016/S1473-3099(20)30144-4) 2020 Published Online March 11, 2020. (See Online/Commentdoi:10.1016/S1473-3099(20)30161-4).
- Langrish, J.P., Mills, N.L., 2014. Air pollution and mortality in Europe. *Lancet* 383. [https://doi.org/10.1016/S0140-6736\(13\)62570-2](https://doi.org/10.1016/S0140-6736(13)62570-2).
- Legambiente, 2019. Mal'aria 2019, il rapporto annuale sull'inquinamento atmosferico nelle città italiane. <https://www.legambiente.it/malaria-2019-il-rapporto-annuale-sullinquinamento-atmosferico-nelle-citta-italiane/>, Accessed date: March 2020.
- Lewtas, J., 2007. Air pollution combustion emissions: characterization of causative agents and mechanisms associated with cancer, reproductive, and cardiovascular effects. *Mutat. Res.* 636 (1–3), 95–133. <https://doi.org/10.1016/j.mrrev.2007.08.003>.
- Li, J., Sun, S., Tang, R., Qiu, H., Huang, Q., Mason, T.G., Tian, L., 2016. Major air pollutants and risk of COPD exacerbations: a systematic review and meta-analysis. *Int. J. Chronic Obstr. Pulm. Dis.* 11, 3079–3091.
- Li, Q., Guan, X., Wu, P., et al., 2020. Early transmission dynamics in Wuhan, China, of novel coronavirus-infected pneumonia. *N. Engl. J. Med.* <https://doi.org/10.1056/NEJMoa2001316> 2020; published online Jan 29.
- Liao, C.-M., Hsieh, Nan-Hung, Chio, Chia-Pin, 2011. Fluctuation analysis-based risk assessment for respiratory virus activity and air pollution associated asthma incidence. *Sci. Total Environ.* 409, 3325–3333. <https://doi.org/10.1016/j.scitotenv.2011.04.056>.
- Lim, H.S., et al., 2006. Cancer survival is dependent on season of diagnosis and sunlight exposure. *Int J Can* 119, 1530–1536.
- Linstone, H.A., 1999. *Decision Making for Technology Executives*. Artech House, Boston-London.
- Liu, M., Huang, Y., Ma, Z., Jin, Z., Liu, X., Wang, H., et al., 2017. Spatial and temporal trends in the mortality burden of air pollution in China: 2004–2012. *Environ. Int.* 98, 75–81.
- Liu, H., Zhang, X., Zhang, H., Yao, X., Zhou, M., Wang, J., et al., 2018. Effect of air pollution on the total bacteria and pathogenic bacteria in different sizes of particulate matter. *Environ. Pollut.* 233, 483–493.
- Ma, Y., Zhao, Y., Liu, J., He, X., Wang, B., Fu, S., Yan, J., Niu, J., Zhou, J., Luo, B., 2020. Effects of temperature variation and humidity on the death of COVID-19 in Wuhan, China. *Sci. Total Environ.*, 138226 <https://doi.org/10.1016/j.scitotenv.2020.138226>.
- Manuell, M.-E., Cukor, J., 2011. Mother Nature versus human nature: public compliance with evacuation and quarantine. *Disasters* 35, 417–442 2011.
- McCullers, J.A., 2006. Insights into the interaction between influenza virus and pneumococcus. *Clin. Microbiol. Rev.* 19, 571e82.
- Medina-Ramón, M., Zanobetti, A., Schwartz, J., 2006. The effect of ozone and PM10 on hospital admissions for pneumonia and chronic obstructive pulmonary disease: a national multicity study. *Am. J. Epidemiol.* 163, 579e88.
- Ministero della Salute, 2020. Covid-19 - situazione in Italia. <http://www.salute.gov.it/portale/nuovocoronavirus/dettaglioContenutiNuovoCoronavirus.jsp?lingua=italiano&id=5351&area=nuovoCoronavirus&menu=vuoto>, Accessed date: March 2020.
- Mochitate, K., Katagiri, K., Miura, T., 2001. Impairment of microbial killing and superoxide-producing activities of alveolar macrophages by a low level of ozone. *J. Health Sci.* 47, 302–309 2001.
- Morawska, L., Cao, J., 2020. Airborne transmission of SARS-CoV-2: The world should face the reality. *Environment International* 139. <https://doi.org/10.1016/j.envint.2020.105730>.
- Murdoch, D.R., Jennings, Lance C., 2009. Association of respiratory virus activity and environmental factors with the incidence of invasive pneumococcal disease. *J. Infect.* 58, 37–46. <https://doi.org/10.1016/j.jinf.2008.10.011>.
- Murphy, K.R., Eivindson, A., Pauksens, K., Stein, W.J., Tellier, G., Watts, R., et al., 2000. Efficacy and safety of inhaled zanamivir for the treatment of influenza in patients with asthma or chronic obstructive pulmonary disease – a double-blind, randomised, placebo controlled, multicentre study. *Clin Drug Invest* 20, 337–349.
- Myllykangas-Luosujärvi, R., Aho, K., Kautiainen, H., Isomäki, H., 1995. Shortening of life span and causes of excess mortality in a population-based series of subjects with rheumatoid arthritis. *Clin. Exp. Rheumatol.* 13 (2), 149–153.
- nCoV-2019 Data Working Group, 2020. Epidemiological data from the nCoV-2019 outbreak: early descriptions from publicly available data. 2020. <http://virological.org/t/epidemiological-data-from-the-ncov-2019-outbreak-early-descriptions-from-publicly-available-data/337>, Accessed date: 13 February 2020.
- Nel, A., 2005. Air pollution-related illness: effects of particles. *Science* 308, 804–806 2005.
- Nenna, R., Evangelisti, M., Frassanito, A., Scagnolari, C., Pierangeli, A., Antonelli, G., Nicolai, A., Arima, S., Moretti, C., Papoff, P., Villa, M.P., Midulla, F., 2017. Respiratory syncytial virus bronchiolitis, weather conditions and air pollution in an Italian urban area: an observational study. *Environ. Res.* 158 (2017), 188–193. <https://doi.org/10.1016/j.envres.2017.06.014>.
- Neu, U., Mainou, B.A., 2020. Virus interactions with bacteria: partners in the infectious dance. *PLoS Pathog.* 16 (2), e1008234. <https://doi.org/10.1371/journal.ppat.1008234>.
- Oh, E.-Y., Ansell, C., Nawaz, H., Yang, C.-H., Wood, P.A., Hrushesky, W.J.M., 2010. Global breast cancer seasonality. *Breast Cancer Res. Treat.* 123, 233–243. <https://doi.org/10.1007/s10549-009-0676-7> 2010.
- Orellano, P., Quaranta, N., Reynoso, J., Balbi, B., Vasquez, J., 2017. Effect of outdoor air pollution on asthma exacerbations in children and adults: systematic review and meta-analysis. *PLoS One* 12 (3), e0174050 (2017).
- Papi, A., Bellettato, C.M., Braccioni, F., Romagnoli, M., Casolari, P., Caramori, P., Fabbri, L.M., Johnston, S.L., 2006. Infections and airway inflammation in chronic obstructive pulmonary disease severe exacerbations. *Am J Respir Crit Care Med* 173 (10), 1114–1121. <https://doi.org/10.1164/rccm.200506-859OC> 16484677.
- Peak, C.M., Childs, L.M., Grad, Y.H., Buckee, C.O., 2017. Comparing nonpharmaceutical interventions for containing emerging epidemics. *Proc. Natl. Acad. Sci. U. S. A.* 114, 4023–4028 2017.
- Pike, A., 2009. *De-industrialization*. Elsevier Ltd (All rights reserved).
- Pope, C.A., 1989. Respiratory disease associated with community air pollution and a steel mill. *Utah Val Am J Public Health* 79, 623–628.
- Pope, C.A., 1996. Particulate pollution and health: a review of the Utah valley experience. *J. Expo. Anal. Environ. Epidemiol.* 6, 23–34.
- Pope, C.A., Ezziati, M., Dockery, D.W., 2009. Fine-particulate air pollution and life expectancy in the United States. *N. Engl. J. Med.* 360, 376–386 2009.
- Prem, K., Liu, Y., Russell, T.W., Kucharski, A.J., Eggo, R.M., Davies, N., et al., 2020. The effect of control strategies to reduce social mixing on outcomes of the COVID-19 epidemic in Wuhan, China: a modelling study. *The Lancet Public Health* [https://doi.org/10.1016/S2468-2667\(20\)30073-6](https://doi.org/10.1016/S2468-2667(20)30073-6) March 25, 2020.
- Public Health England, 2019. MERS-CoV close contact algorithm. Public health investigation and management of close contacts of Middle East Respiratory Coronavirus (MERS-CoV) cases (v17 29 January 2019). 2019. [https://assets.publishing.service.gov.uk/government/uploads/system/uploads/attachment\\_data/file/776218/MERS-CoV\\_Close\\_contacts\\_algorithm.pdf](https://assets.publishing.service.gov.uk/government/uploads/system/uploads/attachment_data/file/776218/MERS-CoV_Close_contacts_algorithm.pdf), Accessed date: 6 February 2020.
- Public Health England, 2020. Novel coronavirus (2019-nCoV) – what you need to know. 2020. <https://publichealthmatters.blog.gov.uk/2020/01/23/wuhan-novel-coronavirus-what-you-need-to-know/>, Accessed date: 31 January 2020.
- Quilty, B., Clifford, S., CCMID nCoV working group, Flasche, S., Eggo, R.M., 2020. Effectiveness of airport screening at detecting travelers infected with 2019-nCoV. 2020. [https://cmmid.github.io/ncov/airport\\_screening\\_report/airport\\_screening\\_preprint\\_2020\\_01\\_30.pdf](https://cmmid.github.io/ncov/airport_screening_report/airport_screening_preprint_2020_01_30.pdf), Accessed date: 5 February 2020.
- Raaschou-Nielsen, O., Andersen, Z.J., Beelen, R., et al., 2013. Air pollution and lung cancer incidence in 17 European cohorts: prospective analyses from the European Study of Cohorts for Air Pollution Effects (ESCAPE). *Lancet Oncol* 14, 813–822.
- Rahman, I., MacNee, W., 2000. Oxidative stress and regulation of glutathione in lung inflammation. *Eur. Respir. J.* 16, 534–554.
- Riley, S., Fraser, C., Donnelly, C.A., et al., 2003. Transmission dynamics of the etiological agent of SARS in Hong Kong: impact of public health interventions. *Science* 300, 1961–1966.
- Riou, J., Althaus, C.L., 2020. Pattern of early human-to-human transmission of Wuhan 2019 novel coronavirus (2019-nCoV), December 2019 to January 2020. *Euro Surveill* 25, 2000058 2020.
- Ségala, C., Poizeau, D., Mesbah, M., Willems, S., Maidenberg, M., 2008. Winter air pollution and infant bronchiolitis in Paris. *Environ. Res.* 106, 96–100. <https://doi.org/10.1016/j.envres.2007.05.003>.
- Shankardass, K., McConnell, R., Jerrett, M., Milam, J., Richardson, J., Berhane, K., 2009. Parental stress increases the effect of traffic-related air pollution on childhood asthma incidence. *Proc. Natl. Acad. Sci. U. S. A.* 106, 12406–12411.
- Shepherd, A., Mullins, J.T., 2019. Arthritis diagnosis and early-life exposure to air pollution. *Environ. Pollut.* 253 (2019), 1030–1037. <https://doi.org/10.1016/j.envpol.2019.07.054>.
- Simoni, M., Baldacci, S., Maio, S., Cerrai, S., Sarno, G., Viegi, G., 2015. Adverse effects of outdoor pollution in the elderly. *J. Thorac. Dis.* 7, 34–45. <https://doi.org/10.3978/j.issn.2072-1439.2014.12.10>.
- Smets, W., Moret, S., Denys, S., Lebeer, S., 2016. Airborne bacteria in the atmosphere: presence, purpose, and potential. *Atmos. Environ.* 139, 214e221.
- Sun, Y., Xu, S., Zheng, D., Li, J., Tian, H., Wang, Y., 2018. Effects of haze pollution on microbial community changes and correlation with chemical components in atmospheric particulate matter. *Sci. Total Environ.* 637e638, 507.
- Swanson, K.C., Altare, C., Wesseh, C.S., et al., 2018. Contact tracing performance during the Ebola epidemic in Liberia, 2014–2015. *PLoS Negl. Trop. Dis.* 12, e0006762 2018.
- Talbot, T.R., Poehling, K.A., Hartert, T.V., Arbogast, P.G., Halasa, N.B., Edwards, K.M., et al., 2005. Seasonality of invasive pneumococcal disease: temporal relation to documented influenza and respiratory syncytial viral circulation. *Am. J. Med.* 118, 285–291.
- The Italian National Institute of Statistics (ISTAT), 2020. Popolazione residente al 1° gennaio. [http://dati.istat.it/Index.aspx?DataSetCode=DCIS\\_POPRES1](http://dati.istat.it/Index.aspx?DataSetCode=DCIS_POPRES1).
- U. S. Census Bureau, 2020. U.S. and world population clock. <https://www.census.gov/popclock/>, Accessed date: April 2020.
- Van Leuken, J.P.G., Swart, A.N., Havelaar, A.H., Van Pul, A., Van der Hoek, W., Heederik, D., 2016. Atmospheric dispersion modelling of bio aerosols that are pathogenic to humans and livestock - a review to inform risk assessment studies. *Microb. Risk Anal.* 1, 19–39.
- Vandini, S., Corvaglia, L., Alessandrini, R., Aquilano, G., Marsico, C., Spinelli, M., Lanari, M., Faldella, G., 2013. Respiratory syncytial virus infection in infants and correlation with meteorological factors and air pollutants. *Ital. J. Pediatr.* 39 (1). <https://doi.org/10.1186/1824-7288-39-1>.
- Vandini, S., Bottau, P., Faldella, G., Lanari, L., 2015. Immunological, viral, environmental, and individual factors modulating lung immune response to respiratory syncytial virus. *Biomed. Res. Int.* 2015, 875723. <https://doi.org/10.1155/2015/875723>.
- Wang, G., Zhang, R., Gomez, M.E., Yang, L., Zamora, M.L., Hu, M., Lin, Y., Peng, J., Guo, S., Meng, J., Li, J., 2016. Persistent sulfate formation from London Fog to Chinese haze. *Proc. Natl. Acad. Sci.* 113 (48), 13630e13635.
- Wang, C., Horby, P.W., Hayden, F.G., Gao, G.F., 2020. A novel coronavirus outbreak of global health concern. *Lancet* 395, 470–473 2020.
- Ward, D.J., Ayres, J.G., 2004. Particulate air pollution and panel studies in children: a systematic review. *Occup. Environ. Med.* 61, e13.

- Wei, K., Zou, Z., Zheng, Y., Li, J., Shen, F., Wu, C.Y., et al., 2016. Ambient bio aerosol particle dynamics observed during haze and sunny days in Beijing. *Sci. Total Environ.* 550, 751e759.
- Wei, M., Liu, Houfeng, Chen, Jianmin, Caihong, Xu, Li, Jie, Pengju, Xu, Sun, Ziwen, 2020. Effects of aerosol pollution on PM<sub>2.5</sub>-associated bacteria in typical inland and coastal cities of northern China during the winter heating season. *Environ. Pollut.* 262 (2020), 114188. <https://doi.org/10.1016/j.envpol.2020.114188>.
- Weinmayr, G., Romeo, E., De Sario, M., Weiland, S.K., Forastiere, F., 2010. Short term effects of PM10 and NO2 on respiratory health among children with asthma or asthma-like symptoms: a systematic review and meta-analysis. *Environ. Health Perspect.* 118, 449–457.
- Wells, C.R., Sah, P., Moghadas, S.M., Pandey, A., Shoukat, A., Wang, Y., Wang, Z., Meyers, L.A., Singer, B.H., Galvani, A.P., 2020. Impact of international travel and border control measures on the global spread of the novel 2019 coronavirus outbreak. *Proceedings of the National Academy of Sciences* Mar 2020, 202002616. <https://doi.org/10.1073/pnas.2002616117>.
- WHO, 2019. Coronavirus disease 2019 (COVID-19). Situation Report 24. World Health Organization, Geneva, p. 2020 February 13, 2020.
- WHO, 2020. Novel Coronavirus (2019-nCoV) Situation Report 16. 2020. World Health Organization. [https://www.who.int/docs/defaultsource/coronaviruse/situation-reports/20200205-sitrep-16-ncov.pdf?sfvrsn=23af287f\\_2](https://www.who.int/docs/defaultsource/coronaviruse/situation-reports/20200205-sitrep-16-ncov.pdf?sfvrsn=23af287f_2), Accessed date: 5 February 2020.
- WHO, 2020a. Novel Coronavirus (2019-nCoV) Situation Report 2. 2020. World Health Organization. [https://www.who.int/docs/defaultsource/coronaviruse/situation-reports/20200122-sitrep-2-2019-ncov.pdf?sfvrsn=4d5bcbca\\_2](https://www.who.int/docs/defaultsource/coronaviruse/situation-reports/20200122-sitrep-2-2019-ncov.pdf?sfvrsn=4d5bcbca_2), Accessed date: 22 January 2020.
- WHO, 2020b. Implementation and Management of Contact Tracing for Ebola Virus Disease. World Health Organization 2015. <http://www.who.int/csr/resources/publications/ebola/contacttracing/en/> accessed Feb 4, 2020.
- WHO, 2020c. Who Director-General's opening remarks at the media briefing on COVID-19. March 3, 2020. <https://www.who.int/dg/speeches/detail/whodirector-general-s-opening-remarks-at-the-media-briefing-on-covid-19-3-march-2020>, Accessed date: 6 March 2020.
- Wilder-Smith, A., Chiew, C.J., Lee, V.J., 2020. Can we contain the COVID-19 outbreak with the same measures as for SARS? *Lancet Infect. Dis.* [https://doi.org/10.1016/S1473-3099\(20\)30129-8](https://doi.org/10.1016/S1473-3099(20)30129-8) 2020; published online March 5.
- Wong, C.M., Yang, L., Thach, T.Q., Chau, P.Y.K., Chan, K.P., Thomas, G.N., et al., 2009. Modification by influenza on health effects of air pollution in Hong Kong. *Environ. Health Perspect.* 117, 248–253.
- Wooding D.J., Ryu M.H., Huls A., Lee A.D., Lin D.T.S., Rider C.F., Yuen A.C.Y., Carlsten C. 2019. Particle depletion does not remediate acute effects of traffic-related air pollution and allergen. A randomized, double-blind crossover study, *Am. J. Respir. Crit. Care Med.* 200 (5) (2019) 565–574.
- Wu, J.T., Leung, K., Leung, G.M., 2020. Now casting and forecasting the potential domestic and international spread of the 2019-nCoV outbreak originating in Wuhan, China: a modelling study. *Lancet* 2020 (395), 689–697.
- Xie, Z.S., Fan, C.L., Lu, R., Liu, P.X., Wang, B.B., Du, S.L., et al., 2018. Characteristics of ambient bio aerosols during haze episodes in China: a review. *Environ. Pollut.* 243, 1930e1942.
- Xu, B., Kraemer Moritz, U.G., 2020. Open access epidemiological data from the COVID-19 outbreak. *Lancet Infect. Dis.* [https://doi.org/10.1016/S0140-6736\(20\)30371](https://doi.org/10.1016/S0140-6736(20)30371) (Available online 19 February 2020).
- Yang, Z., Hao, Jiayuan, Huang, Shuqiong, Yang, Wenwen, Zhu, Zhongmin, Tian, Liqiao, Yuanan, Lu, Xiang, Hao, Liu, Suyang, 2020. Acute effects of air pollution on the incidence of hand, foot, and mouth disease in Wuhan, China. *Atmos. Environ.* 225 (2020), 117358. <https://doi.org/10.1016/j.atmosenv.2020.117358>.
- Yao, X., Ye, F., Zhang, M., et al., 2020. In vitro antiviral activity and projection of optimized dosing design of hydroxychloroquine for the treatment of severe acute respiratory syndrome coronavirus 2 (SARS-CoV-2). *Clin. Infect. Dis.* <https://doi.org/10.1093/cid/ciaa237> published online March 9.
- Zhai, Y., Li, X., Wang, T., Wang, B., Li, C., Zeng, G., 2018. A review on airborne microorganisms in particulate matters: composition, characteristics and influence factors. *Environ. Int.* 113, 74e90.
- Zhang, Y., Ding, A., Mao, H., We, N., Zhou, D., Liu, L., et al., 2016. Impact of synoptic weather patterns and inter-decadal climate variability on air quality in the North China Plain during 1980e2013. *Atmos. Environ.* 124, 119e128.
- Zhang, T., Li, X., Wang, M., Chen, H., Yao, M., 2019. Microbial aerosol chemistry characteristics in highly polluted air. *Sci. China Chem.* 62. <https://doi.org/10.1007/s11426-11019-19488-11423>.
- Zhang Q., Zheng Y., Tong D., Shao M., Wang S., Zhang Y., Xu X., Wang J., He H., Liu W., Ding Y., Lei Y., Li J., Wang Z., Zhang X., Wang Y., Cheng J., Liu Y., Shi Q., Yan L., Geng G., Hong C., Li M., Liu F., Zheng B., Cao J., Ding A., Gao J., Fu Q., Huo J., Liu B., Liu Z., Yang F., He K., Hao J. 2019a. Drivers of improved PM<sub>2.5</sub> air quality in China from 2013 to 2017, *Proceedings of the National Academy of Sciences* Dec, 116 (49) 24463–24469; DOI: <https://doi.org/10.1073/pnas.1907956116>.
- Zheng, X.Y., Ding, H., Jiang, L.N., Chen, S.W., Zheng, J.P., Qiu, M., Zhou, Y.X., Chen, Q., Guan, W.J., 2015. Association between air pollutants and asthma emergency room visits and hospital admissions in time series studies: a systematic review and meta-analysis. *PLoS One* 10 (9), e0138146 (2015).
- Zhong, J., Zhang, X., Dong, Y., Wang, Y., Wang, J., Zhang, Y., et al., 2018. Feedback effects of boundary-layer meteorological factors on explosive growth of PM<sub>2.5</sub> during winter heavy pollution episodes in Beijing from 2013 to 2016. *Atmos. Chem. Phys.* 18, 247e258.
- Zhou, W., et al., 2005. Vitamin D is associated with improved survival in early-stage non-small cell lung cancer patients. *Cancer Epidemiol. Biomark. Prev.* 14 (10), 2303–2309.
- Zhu, Y., Xie, J., 2020. Association between ambient temperature and COVID-19 infection in 122 cities from China. *Sci. Total Environ.* <https://doi.org/10.1016/j.scitotenv.2020.138201>.
- Zhu, N., Zhang, D., Wang, W., et al., 2020. A novel coronavirus from patients with pneumonia in China, 2019. *N. Engl. J. Med.* <https://doi.org/10.1056/NEJMoa2001017> 2020; published Feb 20.